



Jardine Road, E1W

£500,000

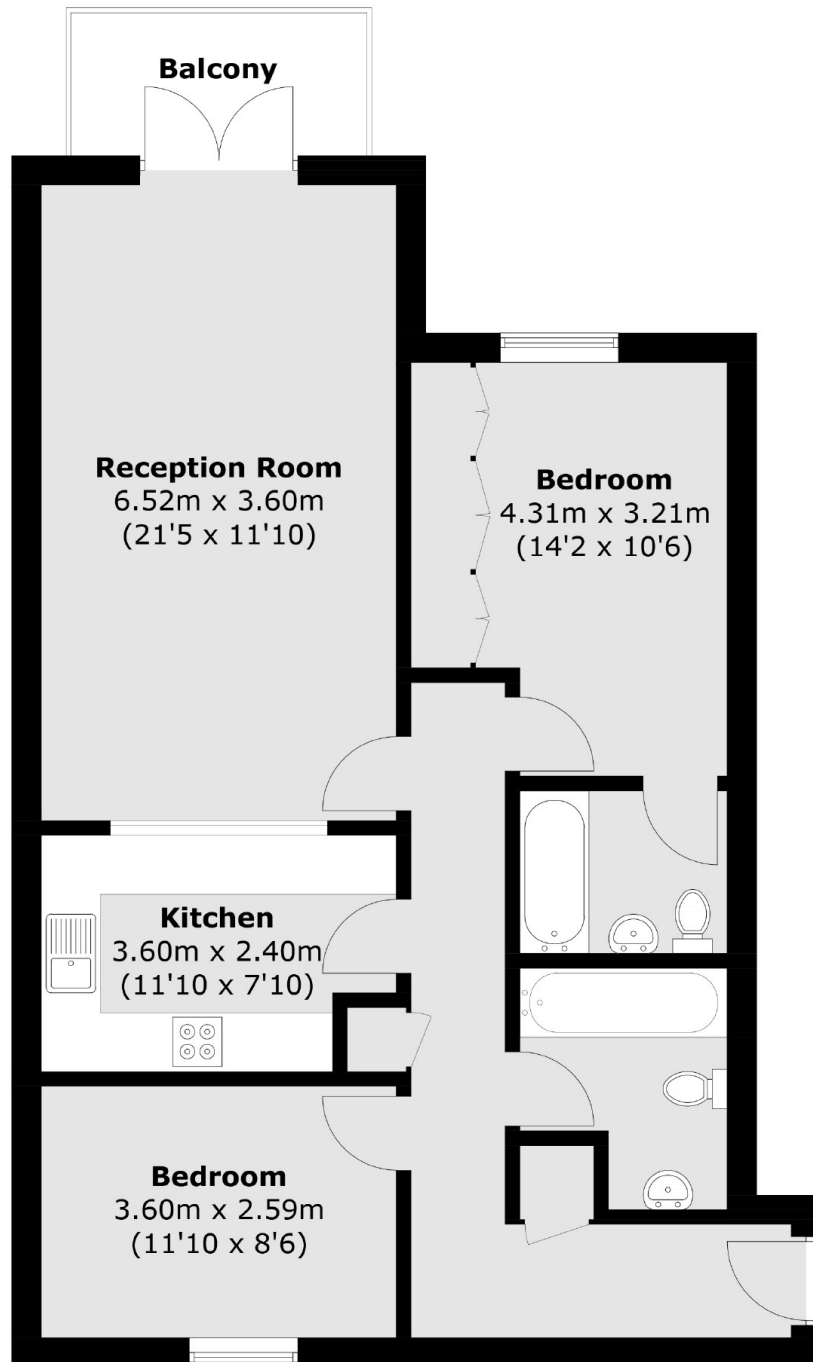
A two bedroom home located within Atlantic Wharf offered to the market on a chain free basis. Features to include private balcony with river views, day porter, allocated parking, a share of the management company.

Atlantic Wharf is under 0.5 miles from Limehouse DLR Station which offers good links to the City and Canary Wharf. The Thames Path and the Cycle Super highway is also moment from the development.

Features

Offers In Excess Of
822 Sq.Ft
River Views
Day Porter
Two Double Bedrooms
Allocated Parking

Jardine Road, London, E1W



Total area (approx.): 76.4 sq. m (822.4 sq. ft)
Balcony area (approx.): 4.3 sq. m (46.3 sq. ft)