



The Highway, E1W

£500,000

A two bedroom home offering over 800 sq.ft of ample living space within the sought after riverside development Free Trade Wharf. The property has a private balcony offering water views, residents leisure facilities, concierge service and secure allocated parking.

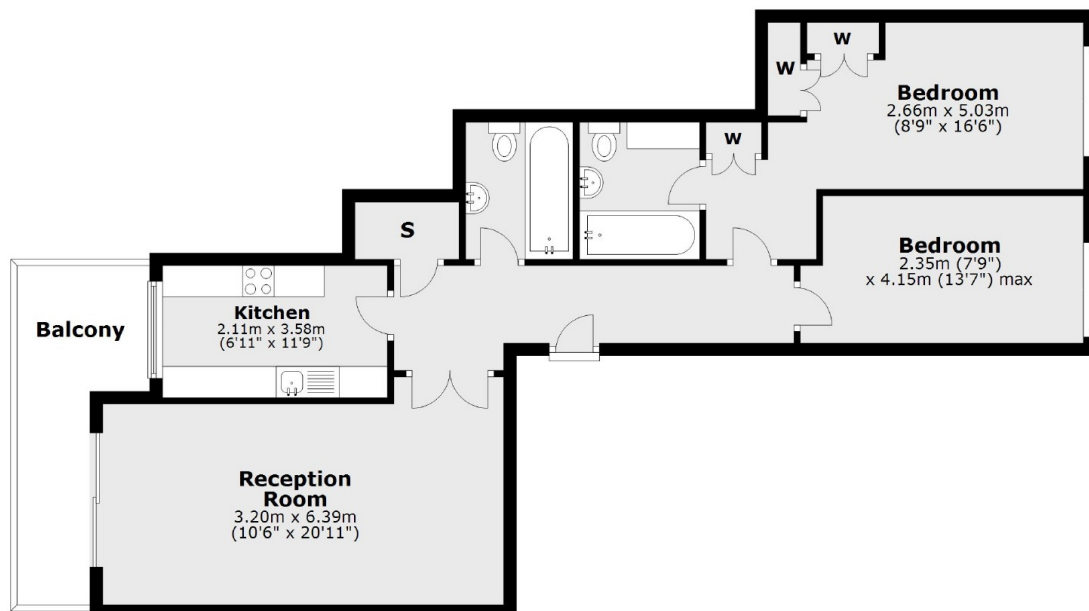
Free Trade Wharf is a riverside development that's a short walk away from Limehouse DLR Station and the famous pubs in Wapping.

Features

Offers In Excess Of
Two Bedrooms
Two Bathrooms
River Facing
Allocated Parking
Residents Function Room

The Highway, London, E1W

Second Floor



Main area: Approx. 76.1 sq. metres (819.3 sq. feet)
Plus balconies, approx. 8.8 sq. metres (95.0 sq. feet)