

Royal Mint Street, E1  
£1,400,000

**Dexters**



## Royal Mint Street, E1

Offering over 1000 Sq.Ft of ample living space and additional 198 Sq.Ft terrace is this three bedroom home located within the Royal Mint Street development. Features to include concierge service, residents leisure facilities, cinema room and meeting rooms available.

Accommodation consists of entrance hall, open plan reception room with access to terrace, re-fitted kitchen, three bedrooms and two bathrooms. The development offers high class facilities to include gym, swimming pool, cinema room, and concierge service.

Residents t can also enjoy the lounge, various meeting areas and communal gardens. The property is also sold on a chain free basis.

Royal Mint Street is ideally located for Tower Gateway, Tower Hill, Aldgate and Shadwell DRL Stations all proved good links to The City and Canary Wharf. St Katharine Docks and a Waitrose super market are also accessible form the development.

### Features

Guide Price £1,400,000-

£1,450,000

1059.2 Sq.Ft

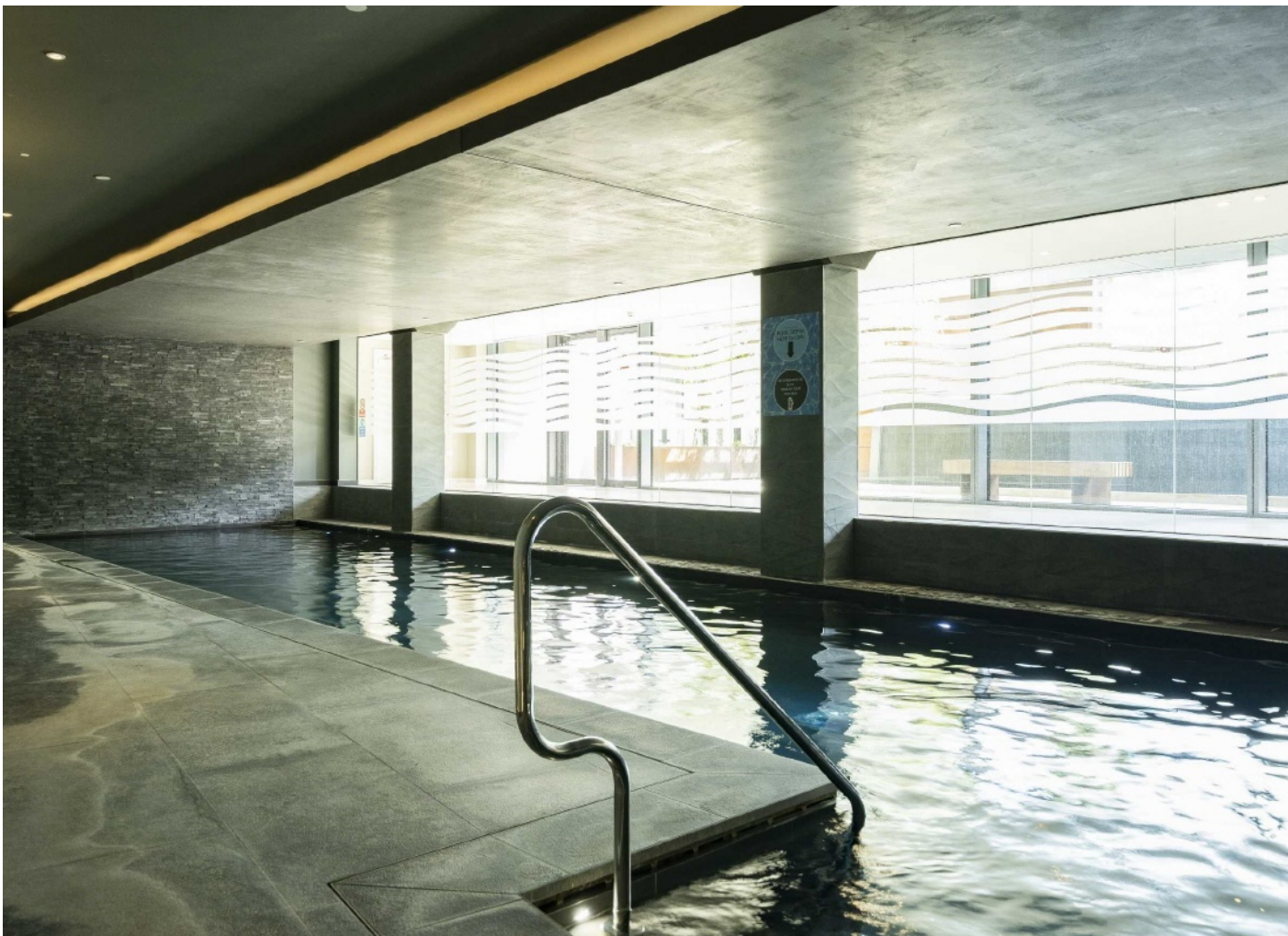
198 Sq.Ft Balcony

Re-Fitted Kitchen

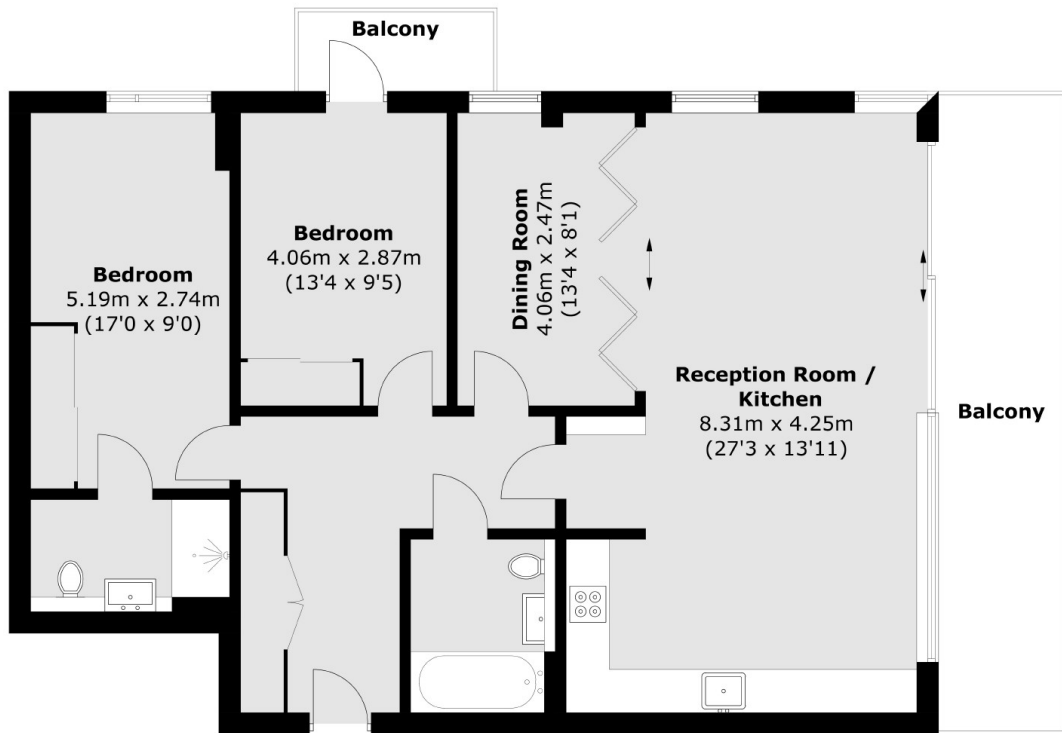
No Onward Chain







Royal Mint Street,  
London, E1



Total area (approx.): 98.4 sq. m (1,059.2 sq. ft)  
Balcony area (approx.): 18.4 sq. m (198.0 sq. ft)