



## Snowsfields, SE1

### £1,050,000

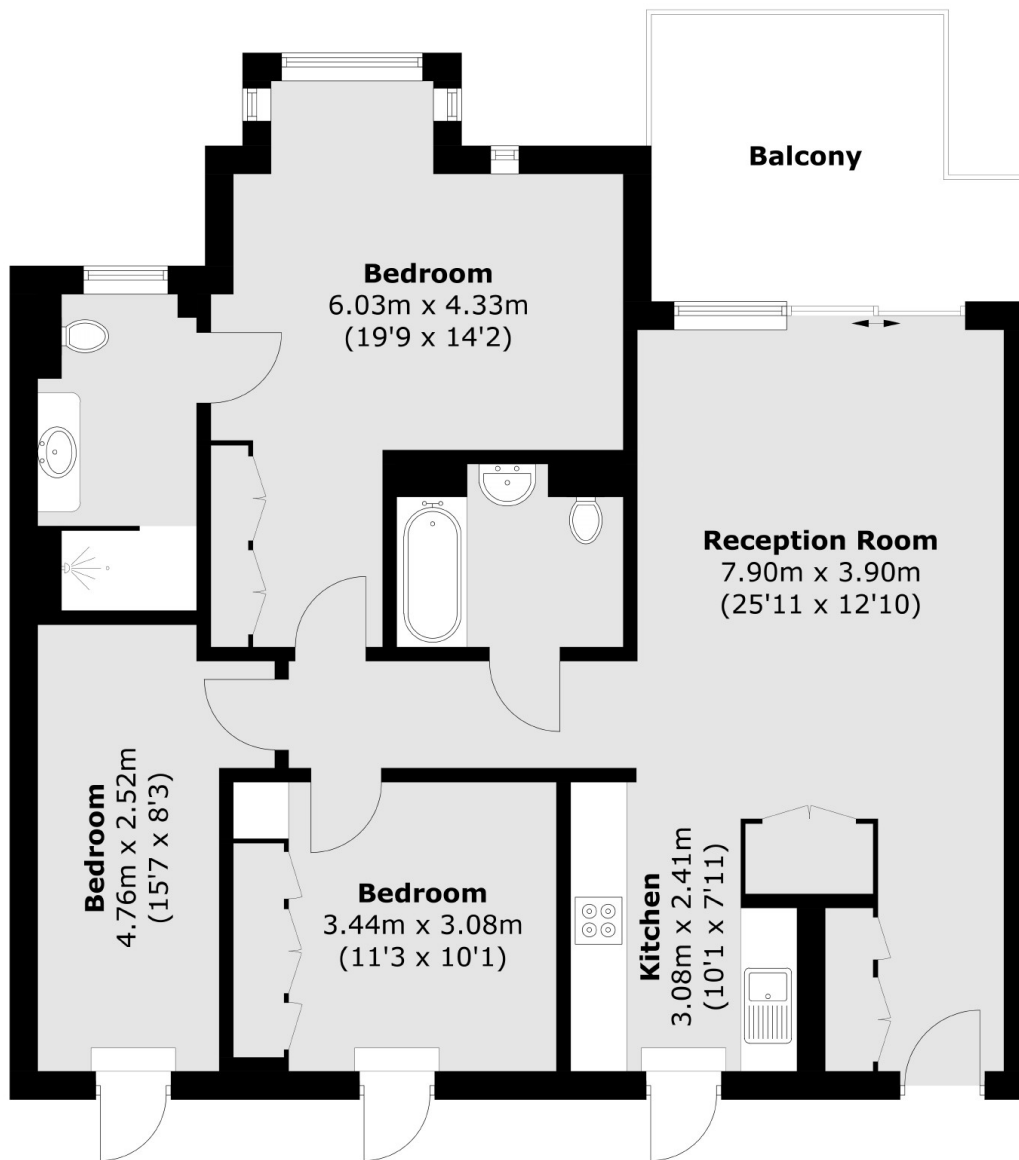
A highly attractive, modern apartment in Snowsfields Yard, with a spacious living room, leading out onto a large private balcony, with a high spec kitchen, three bedrooms and two bathrooms. 24 hour concierge and sold chain free. Offers in excess of £1,050,000.

Snowsfields Yard is incredibly well located, adjacent to London Bridge Station, moments from Bermondsey Street, the Shard and the river, with excellent transport links and a numerous local amenities.

### Features

- OIEO £1.05m
- High Spec Apartment
- Three Bedrooms
- Two Bathrooms
- Large Living Room
- Private Balcony
- Chain Free Sale

# Snowsfields, London, SE1



Total area (approx.): 91.4 sq. m (983.8 sq. ft)  
Balcony: 10.7 sq. m (115.2 sq. ft)