



Park Drive, E14

£1,050 Per week

A three bedroom three bathroom apartment in One Park Drive. The apartment has an open plan reception, wood flooring, built in storage and two private balconies with river views. The development benefits from 24 hour concierge, residents gym and private lounge.

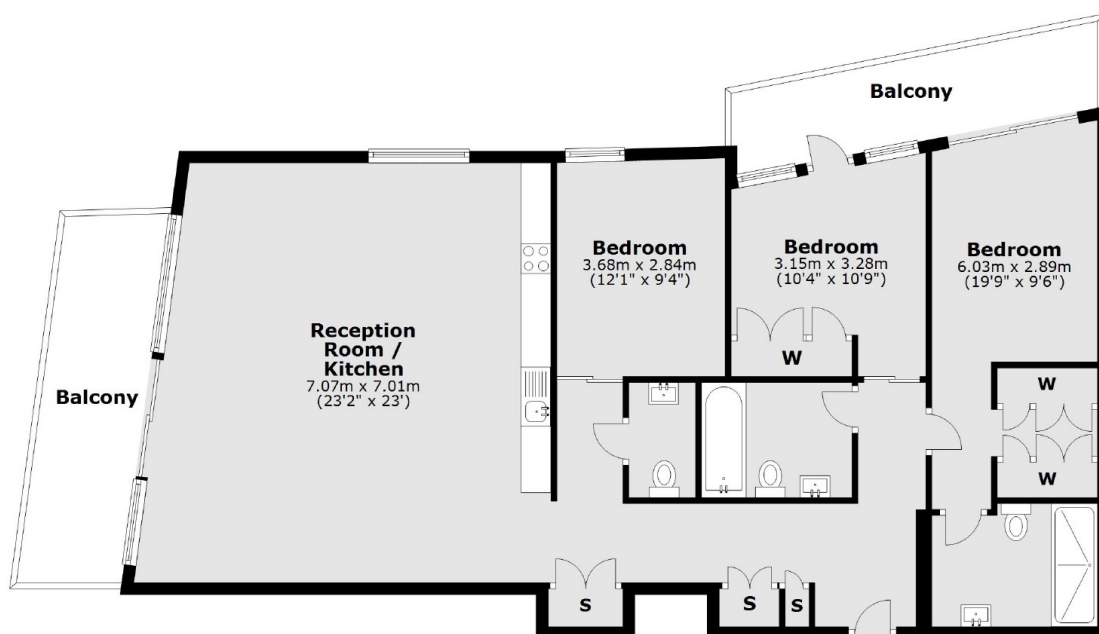
Park Drive is a newly completed development moments from the shops, bars and restaurants of Canary Wharf, including the popular Roka Restaurant.

Features

- Three Bedrooms
- Three Bathrooms
- Wood Flooring
- Residents Gym
- Residents Private Lounge
- Secure Parking

Park Drive, London, E14

Fourth Floor



Main area: Approx. 118.0 sq. metres (1270.1 sq. feet)
Plus balconies, approx. 21.1 sq. metres (227.1 sq. feet)