



## Blackwall Way, E14

### £400,000

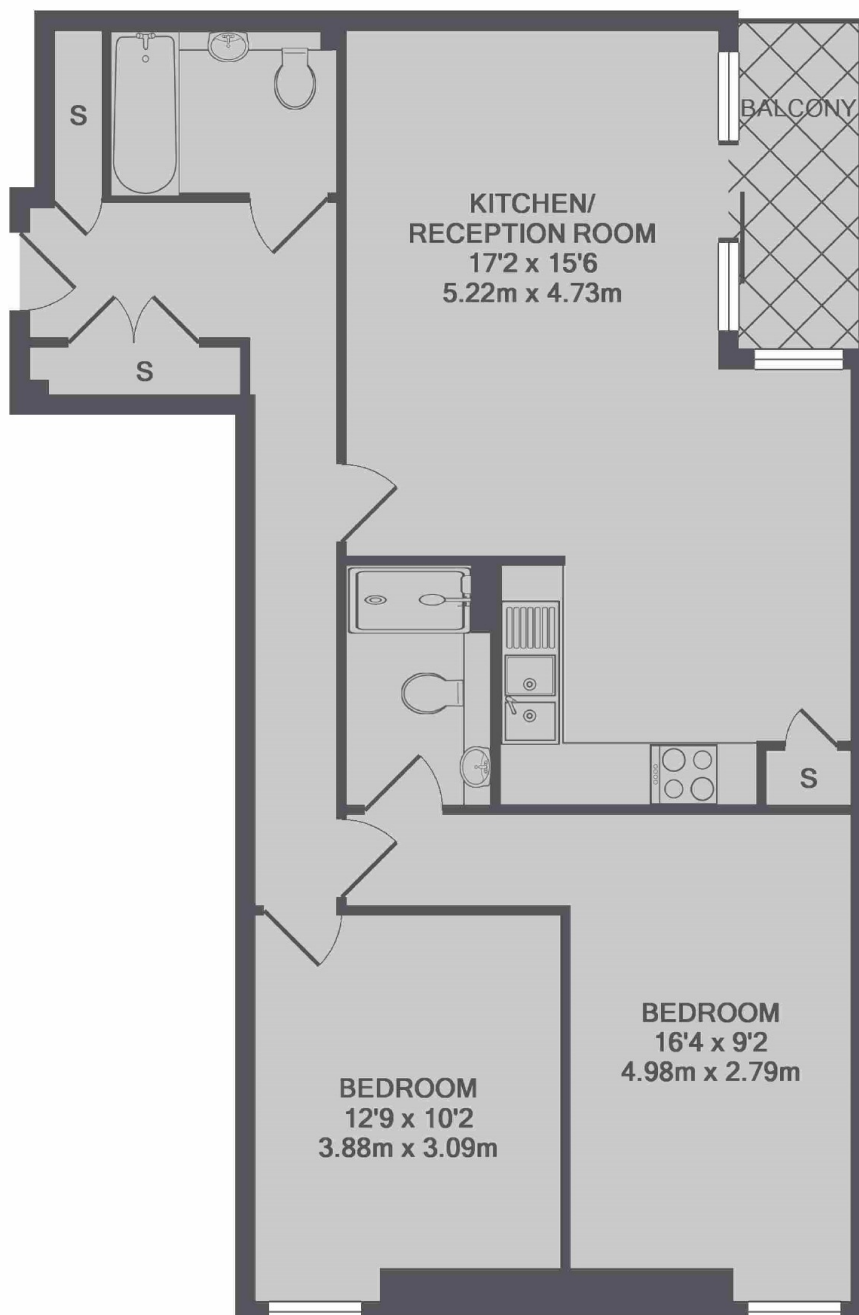
A large two bedroom apartment on the ninth floor of this popular development. This modern apartment has a private balcony, wooden flooring throughout and a residents gym.

Elektron Tower is a modern development within walking distance of the shops, bars and restaurants of Canning Town and Canary Wharf.

### Features

- Two Bedrooms
- Two Bathrooms
- Ninth Floor
- Balcony
- Residents Gym
- Concierge

# Blackwall Way, London, E14



TOTAL APPROX. FLOOR AREA 837 SQ.FT. (77.7 SQ.M.)