



Rotherhithe Street, SE16

£612 Per week

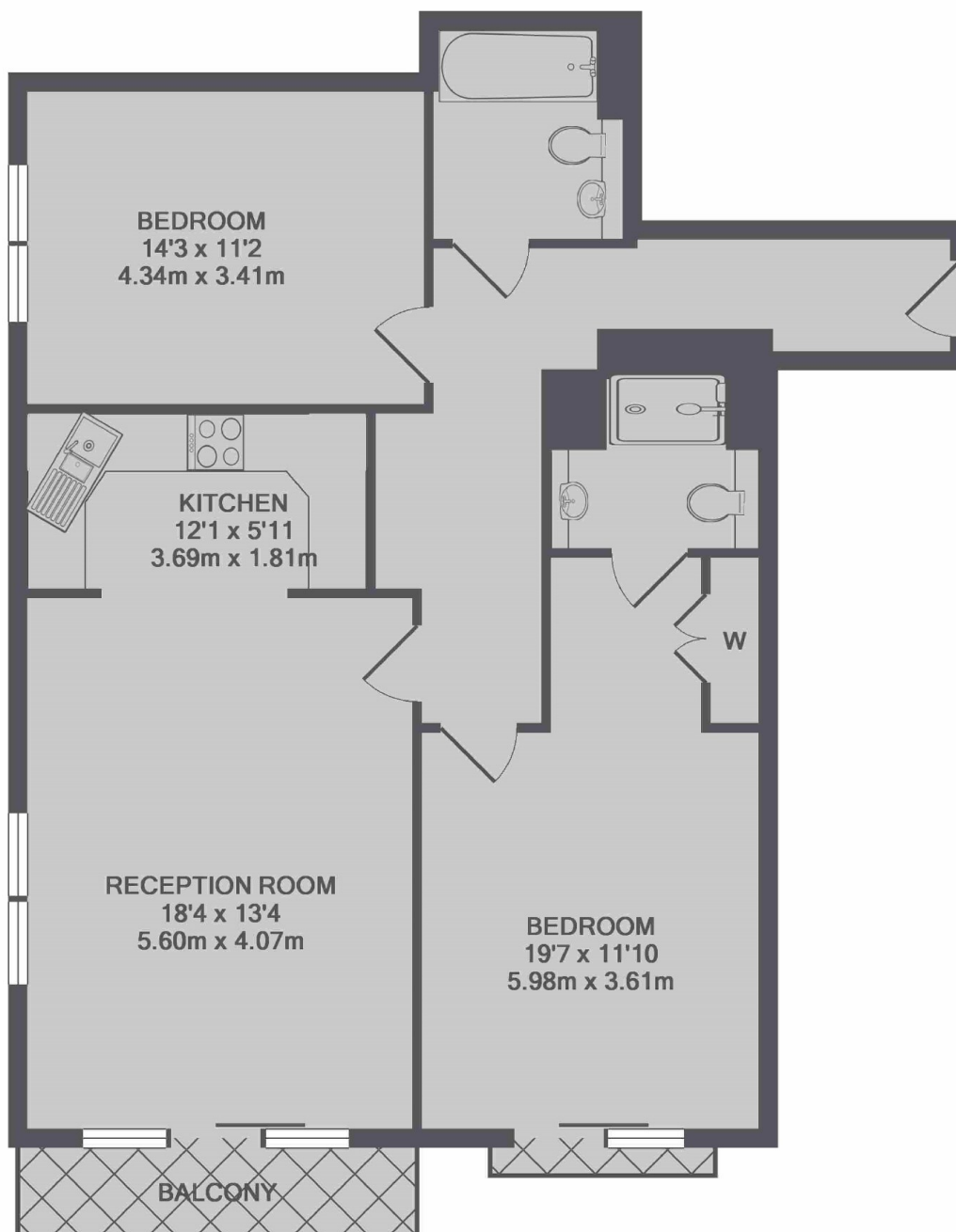
A spacious two double bedroom property in Rotherhithe. The property faces onto the river with stunning views, enjoyed from a large private balcony. There is a 24 hour concierge, and the development is completely gated.

Pacific Wharf is a private development overlooking The River Thames. Surrey Quays Shopping Centre has numerous retail outlets, and there are good bus and underground links close by.

Features

- Two Double Bedrooms
- Two Bathrooms
- Furnished
- Parking
- Balcony
- Concierge

Rotherhithe Street, London, SE16



TOTAL APPROX. FLOOR AREA 943 SQ.FT. (87.6 SQ.M.)