



## Shad Thames, SE1

£750,000

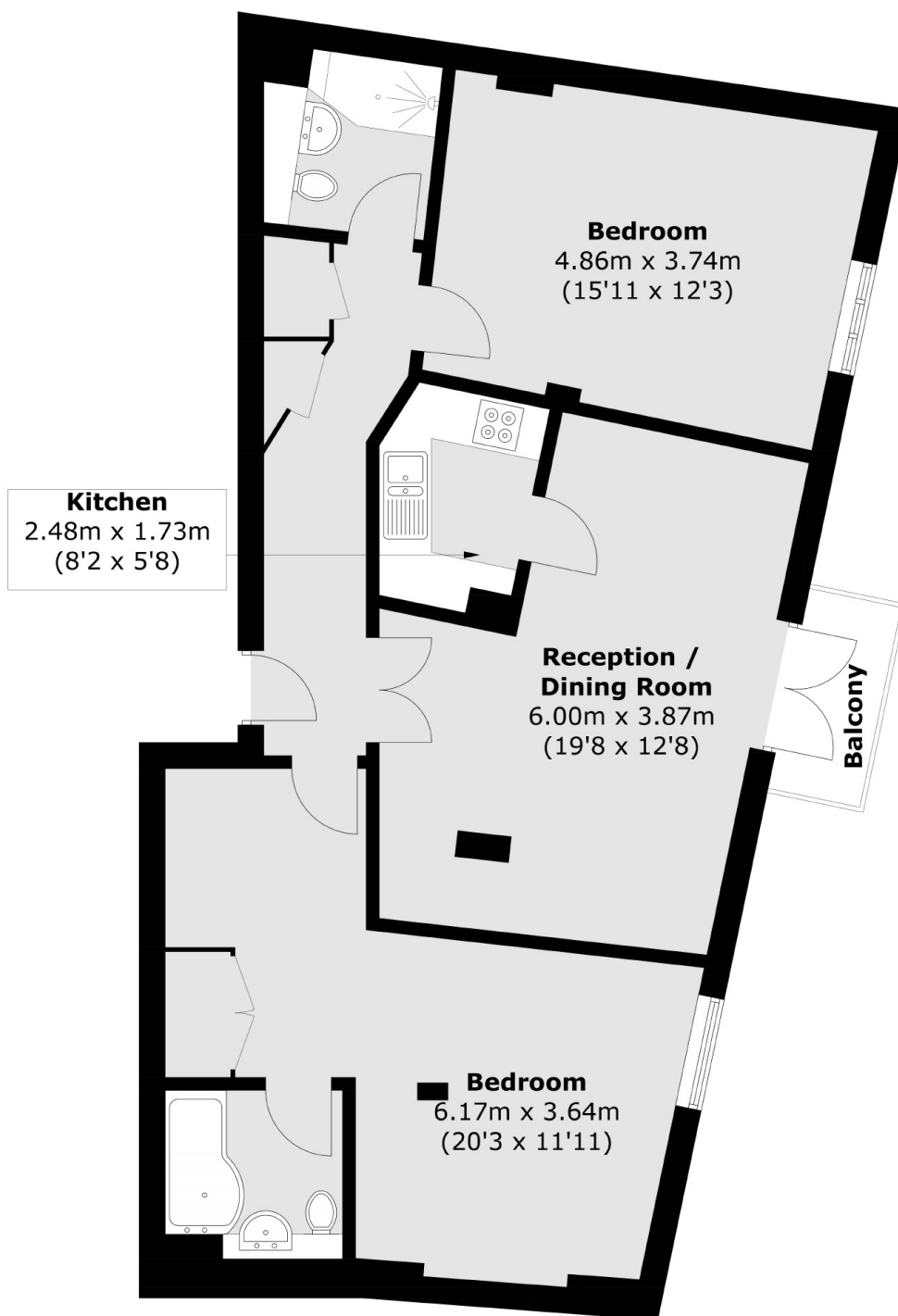
Located in the heart of Shad Thames, this immaculately presented two double bedroom warehouse apartment boasts stunning period features, exposed brick work, ample living space, lots of storage and a private balcony overlooking the historic St. Saviours Dock.

Dockhead Wharf is enviably located, with a plethora of riverside restaurants, independent cafés, and artisan delis on your doorstep, along with Tower Bridge, the City, Borough Market, Bermondsey Street, and Maltby Street Market.

### Features

- Views Of The River
- Private Balcony
- Communal Roof Terrace
- Secure Allocated Parking
- Day Concierge Facilities
- Chain Free

# Shad Thames, London, SE1



Total area (approx.): 84.5 sq. m (909.5 sq. ft)  
Balcony: 2.5 sq. m (26.9 sq. ft)