



Empire Square West, SE1 £500,000

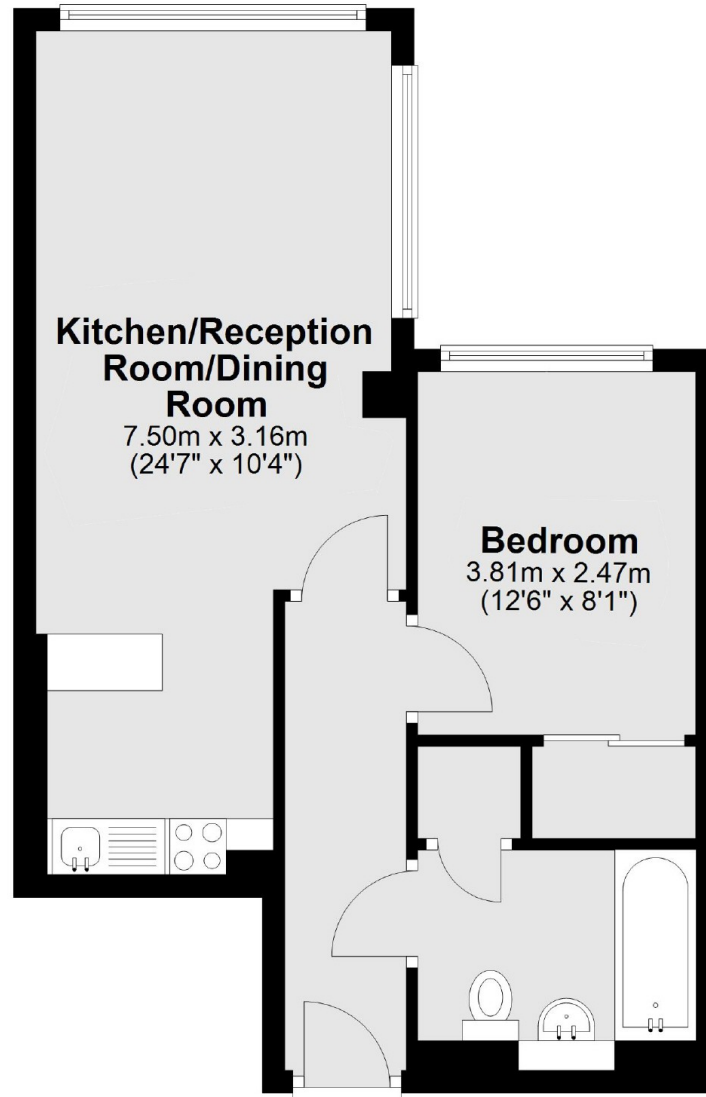
A highly attractive 10th floor apartment, with incredible panoramic views, a generous double bedroom, three piece bathroom, an open plan kitchen and living room, comfort cooling and underfloor heating and secure allocated underground parking. Chain free sale.

Empire Square is enviably located in the heart of SE1 at the foot of Borough High Street within 0.4 miles of London Bridge Station and Borough Market, with Borough underground just around the corner.

Features

- Panoramic Views
- Secure Allocated Parking
- One Double Bedroom
- Open Plan Living Space
- 24 Hour Concierge
- Chain Free Sale

Empire Square West, London, SE1



Total area: approx. 42.1 sq. metres (453.3 sq. feet)