



## Wharf Place, E2

£575,000

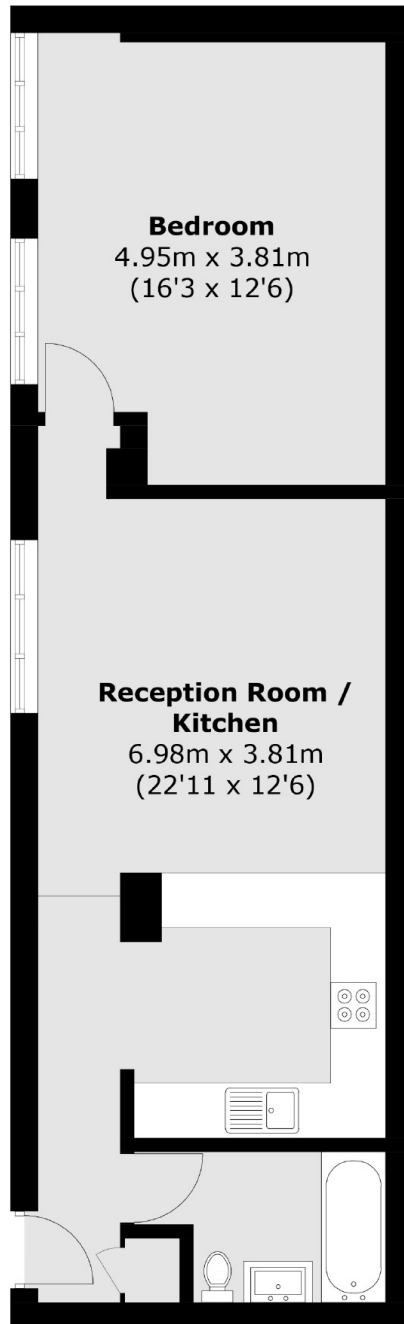
A large one bedroom apartment on Regent's Canal. The property benefits from an open plan kitchen/ living area with windows facing the canal and access to communal terrace gardens with views of the popular Broadway Market.

Located at the bottom of Broadway Market, right on the Canal with an abundance of local amenities and London Fields Park nearby. Also ideally located a short walk away from Bethnal Green underground and London Fields Overground.

### Features

Offers In Excess Of  
Chain Free  
Underground Parking  
Communal Gardens  
Regent's Canal  
Broadway Market  
Columbia Road Flower Market

# Wharf Place, London, E2



Total area (approx.): 52.9 sq. m (569.4 sq. ft)