



## Madeira Street, E14

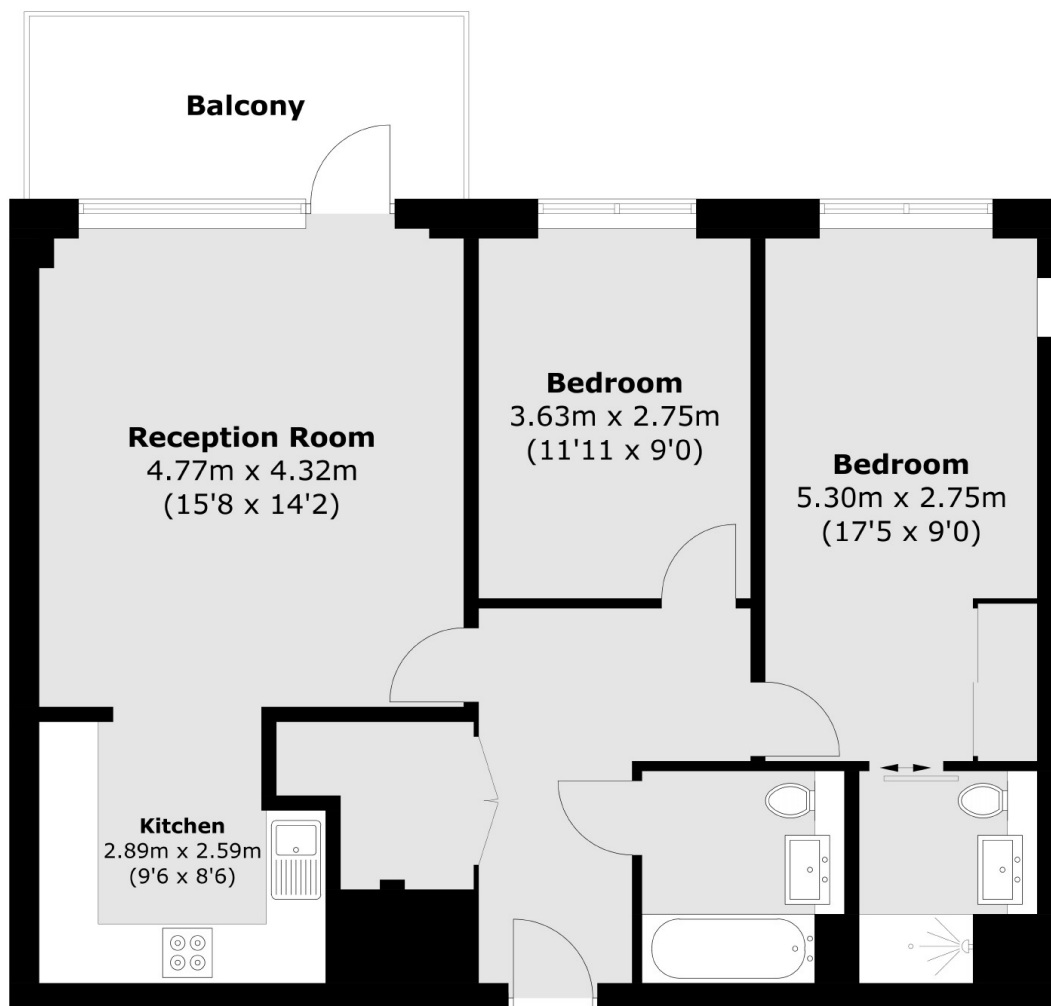
£500,000

Presented in immaculate condition and offering 834.2 Sq.Ft of ample living space is this two bedroom home located in E14. Features to include private terrace with park views, residents gym and concierge.

### Features

Third Floor  
Residents Gym  
Shared Concierge  
Two Bathrooms  
Private Terrace with Park Views  
Guide Price £500,000-  
£525,000

# Madeira Street, London, E14



Total area (approx.): 77.5 sq. m (834.2 sq. ft)  
Balcony area (approx.): 8.1 sq. m (87.2 sq. ft)