



Blackwall Way, E14

£475,000

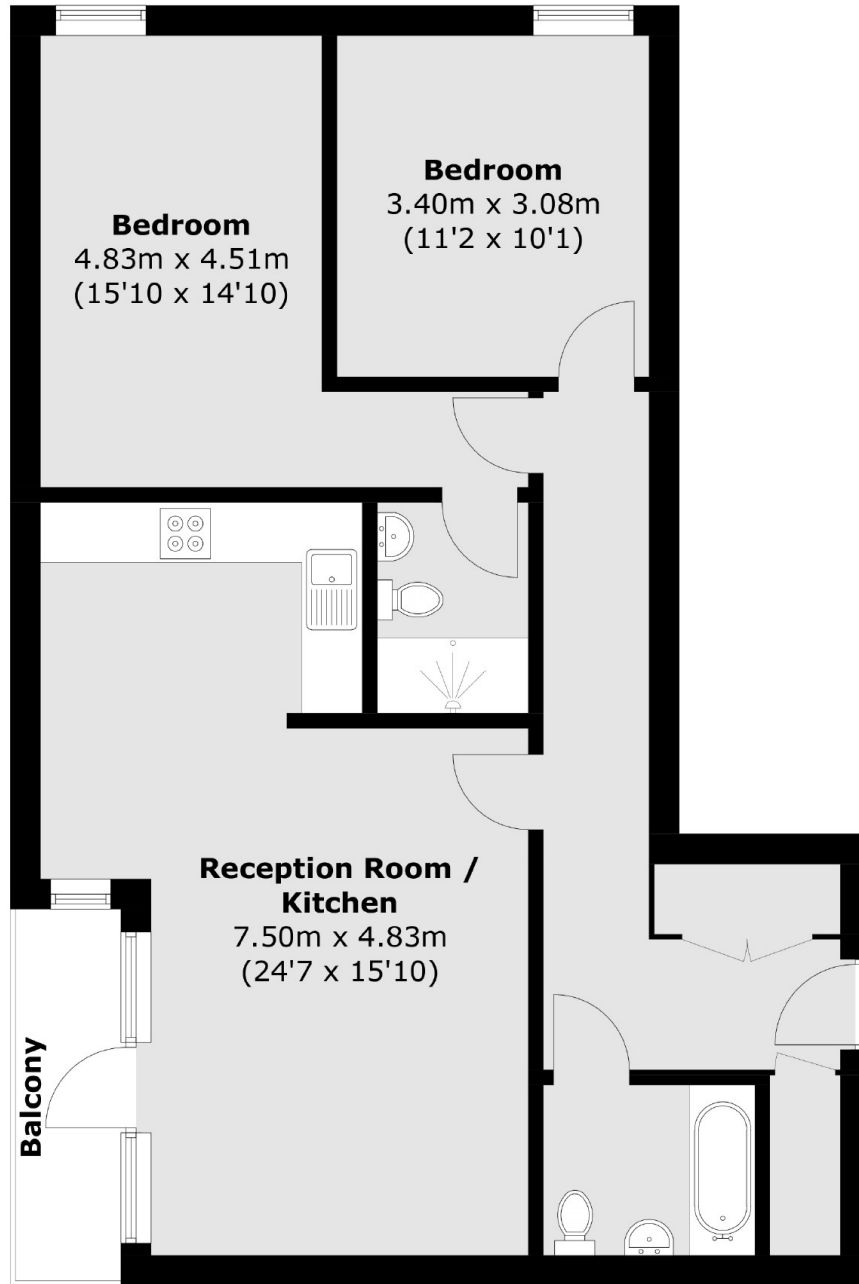
Offering 830 Sq.Ft of ample living space is this two bedroom apartment offered to the market in immaculate condition. Features to include private balcony, two bathrooms, residents gym, 24 concierge service and 900 plus year lease.

Elektron Tower is located by East India DLR Station which gives you direct links to The City and Canary Wharf. The development is also under a mile walk to the shops and restaurants of Canary Wharf.

Features

- 830 Sq.Ft
- 6th Floor
- Two Double Bedrooms
- Concierge Service
- Residents Gym
- 900 Plus Year Lease

Blackwall Way,
London, E14



Total area (approx.): 77.1 sq. m (829.9 sq. ft)
Balcony: 3.9 sq. m (42.0 sq. ft)