



Rotherhithe Street, SE16

£580,000

Situated within a stunning Grade II listed Warehouse Conversion, this two double bedroom flat boasts a large living space, separate kitchen, two bathrooms, ample storage, concierge, gym and swimming pool facilities.

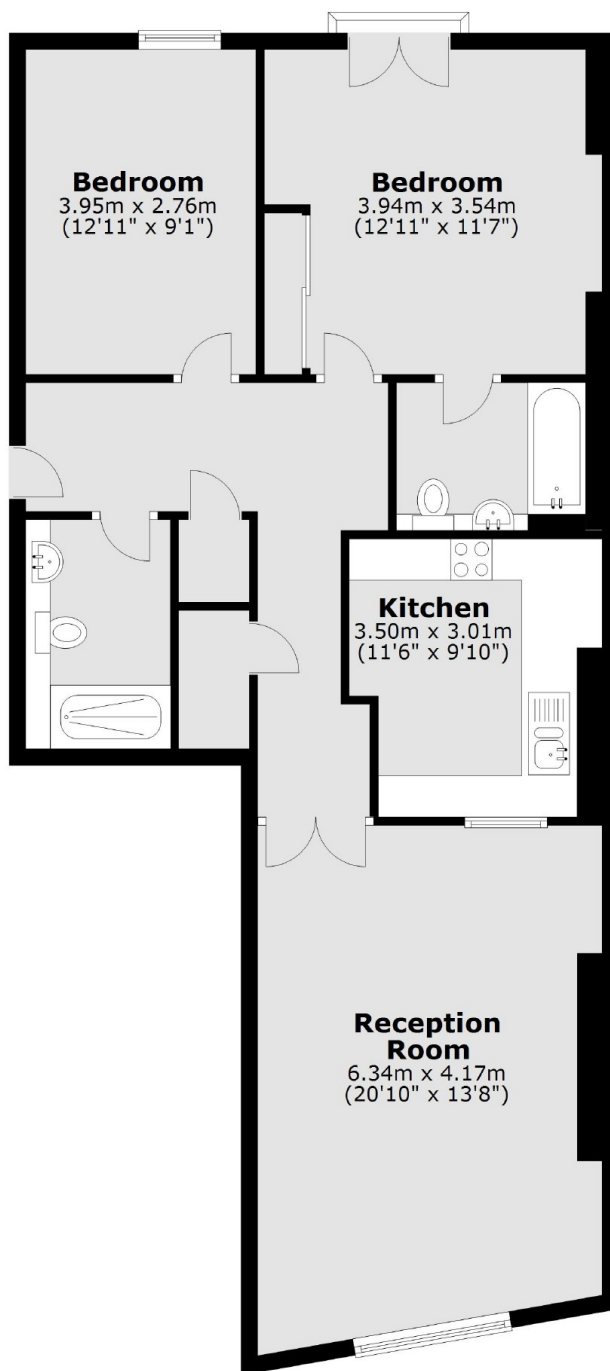
Globe Wharf is situated along the river and is only 0.6 miles from Rotherhithe station and 0.8 miles from Canada Water station. A wide range of shops, cafés, riverside pubs and restaurants are close by.

Features

- Two Double Bedrooms
- Warehouse Conversion
- Excellent Condition
- Concierge, Gym and Pool
- Share Of The Freehold
- Off-Street parking

Rotherhithe Street, London, SE16

Second Floor



Total area: approx. 88.3 sq. metres (950.8 sq. feet)