



## Bermondsey Square, SE1

£650,000

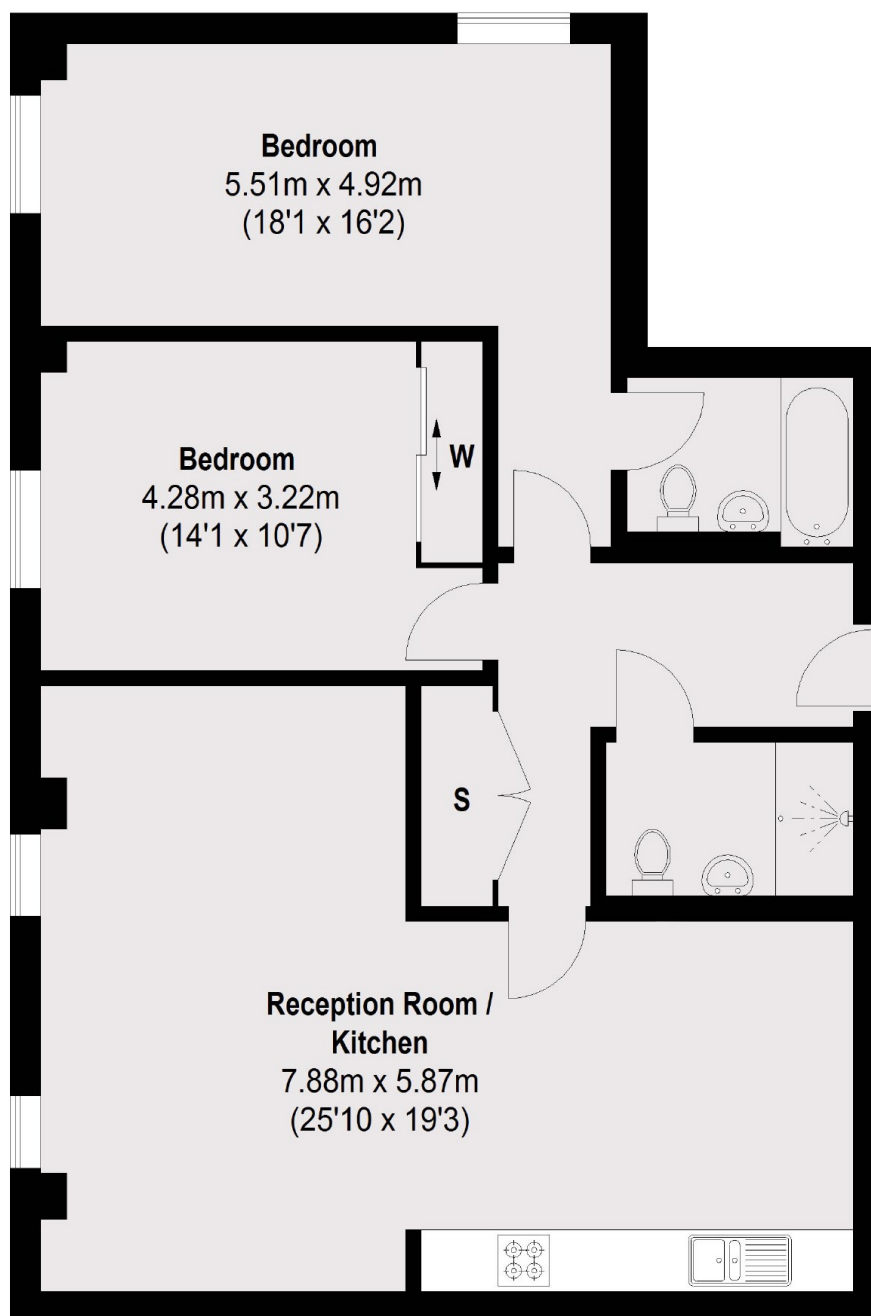
Located moments from Bermondsey Street, this two double bedroom flat is immaculately presented throughout and boasts a large open plan kitchen and living space, two bathrooms and ample storage.

Bermondsey Square is located 0.5 miles from London Bridge station and 0.6 miles to Bermondsey station. Bermondsey Street, Maltby Street and a wide range of shops, cafés and restaurants are moments away.

### Features

- Two Bedrooms
- Two Bathrooms
- Fantastic Location
- 24 hour Concierge
- Bicycle Storage
- Valid EWS1 Form

# Bermondsey Square, London, SE1



## First Floor

Total area (approx.): 88.52 sq. m (953 sq. ft)