



Shad Thames, SE1

£795,000

Located in the heart of Shad Thames, this two double bedroom flat is in fantastic condition and retains all of its original features. It boasts a spacious living space, modern kitchen, two bathrooms, two juliet balconies and allocated parking space.

Wheat Wharf Apartments is situated on Shad Thames and is surrounded by restaurants, shops and delis. London Bridge station is 0.4 miles away.

Features

- Two Double Bedroom
- Two Bathrooms
- Incredible Location
- Secure Allocated Parking
- Share of Freehold
- Chain Free



Shad Thames, SE1

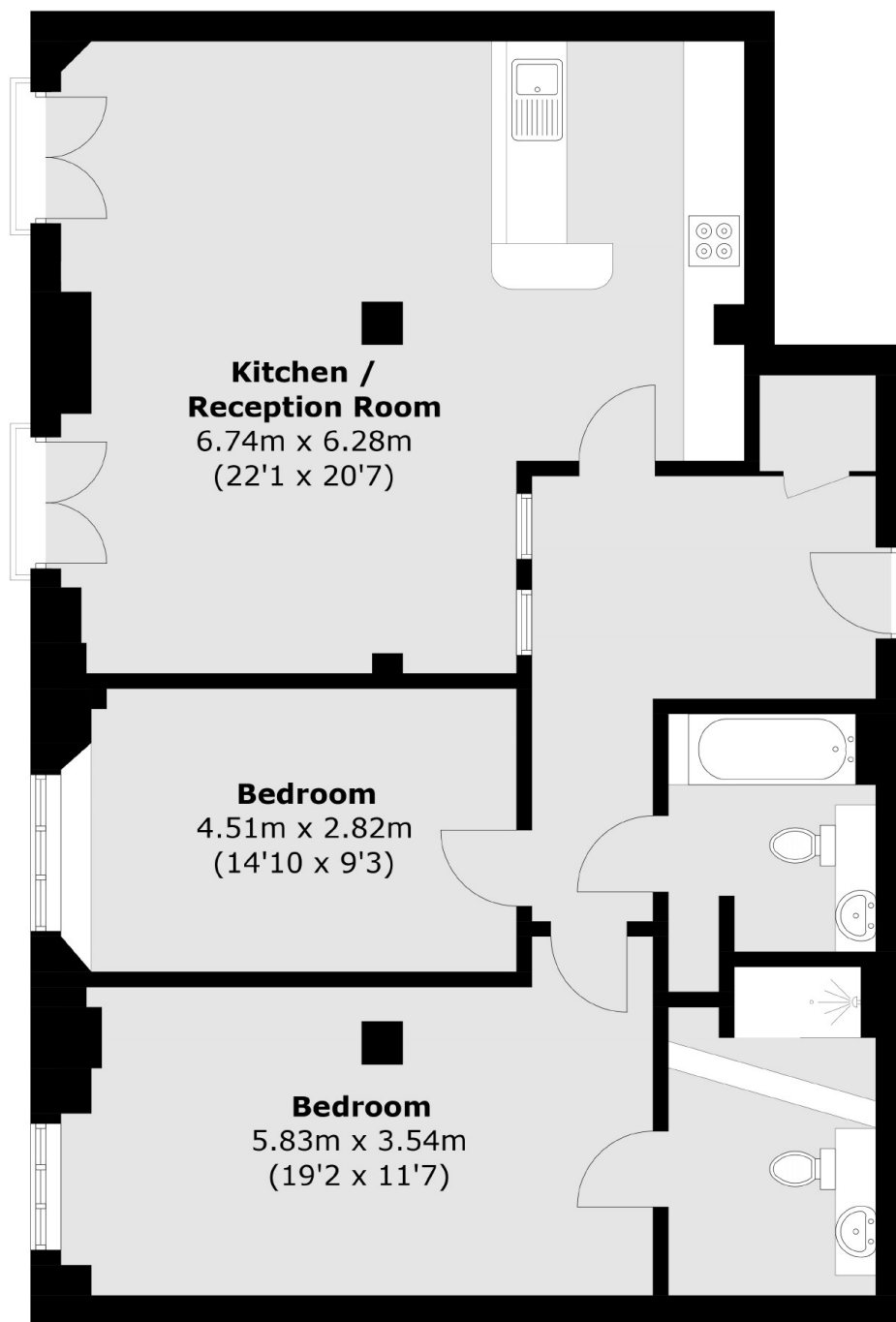
Boasting stunning wooden beams and exposed brick work, the living space looks onto Shad Thames and offers ample space for living and dining.

The flat also offers two large double bedrooms, one with an en-suite and an additional family bathroom. There is also ample storage throughout the flat which is so beautifully decorated.

Wheat Wharf Apartments is a stunning Warehouse conversion offering lift access and secure parking. The development is situated moments from the river.



Shad Thames, London, SE1



Total area (approx.): 96.0 sq. m (1033.3 sq. ft)

Dexters

London Bridge
54 Borough High Street
London
SE1 1XL

Sales
020 7650 5 100

Energy Rating: D. We aim to make our particulars both accurate and reliable. However they are not guaranteed; nor do they form part of an offer or contract. If you require clarification on any points then please contact us, especially if you're traveling some distance to view. Please note that appliances and heating systems have not been tested and therefore no warranties can be given as to their good working order.

 **RICS** | Regulated
Estate Agent
and Letting Agent

dexters.co.uk