



## Naomi Street, SE8

£525,000

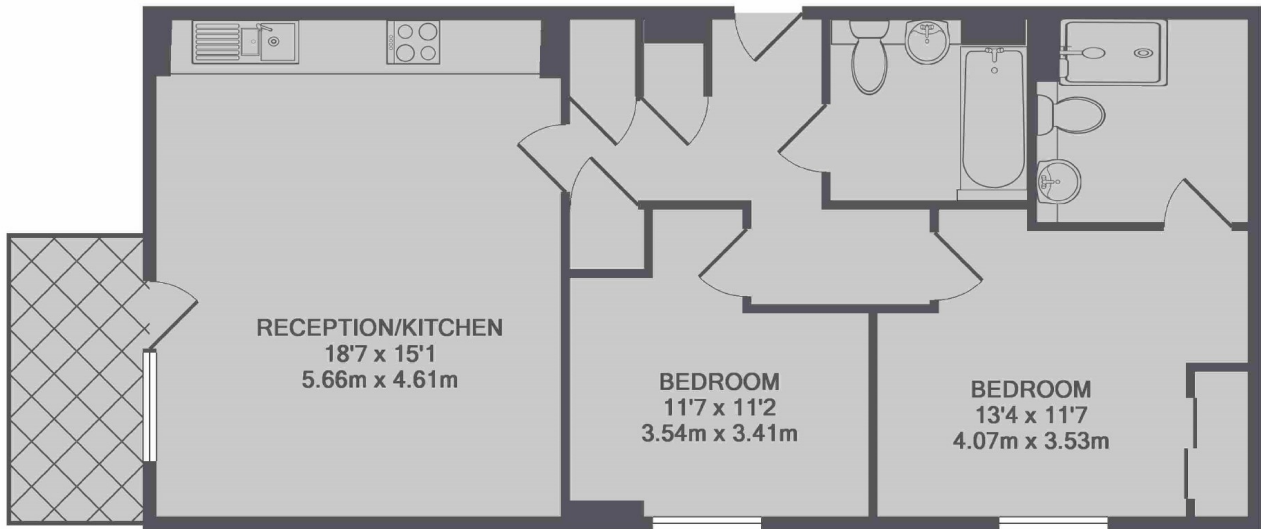
Situated within this sought after development, this two double bedroom flat is in fantastic condition and boasts a large open plan kitchen/ living space, two bathrooms, storage, private balcony, secure parking concierge & gym facilities.

Nyland Court is located only 0.5 miles from Surrey Quays station and 0.8 miles from Canada Water station offering excellent transport links to all of London. A wide range of shops, cafés and restaurants are close by.

### Features

- Two Double Bedrooms
- Two Bathrooms
- Secure Parking
- Private Balcony
- Gym Facilities & 24 Hr Concierge
- Valid EWS1 Form
- OIEO £525,000

# Naomi Street, London, SE8



TOTAL APPROX. FLOOR AREA 746 SQ.FT. (69.3 SQ.M.)