



Fairmont Avenue, E14

£450 Per week

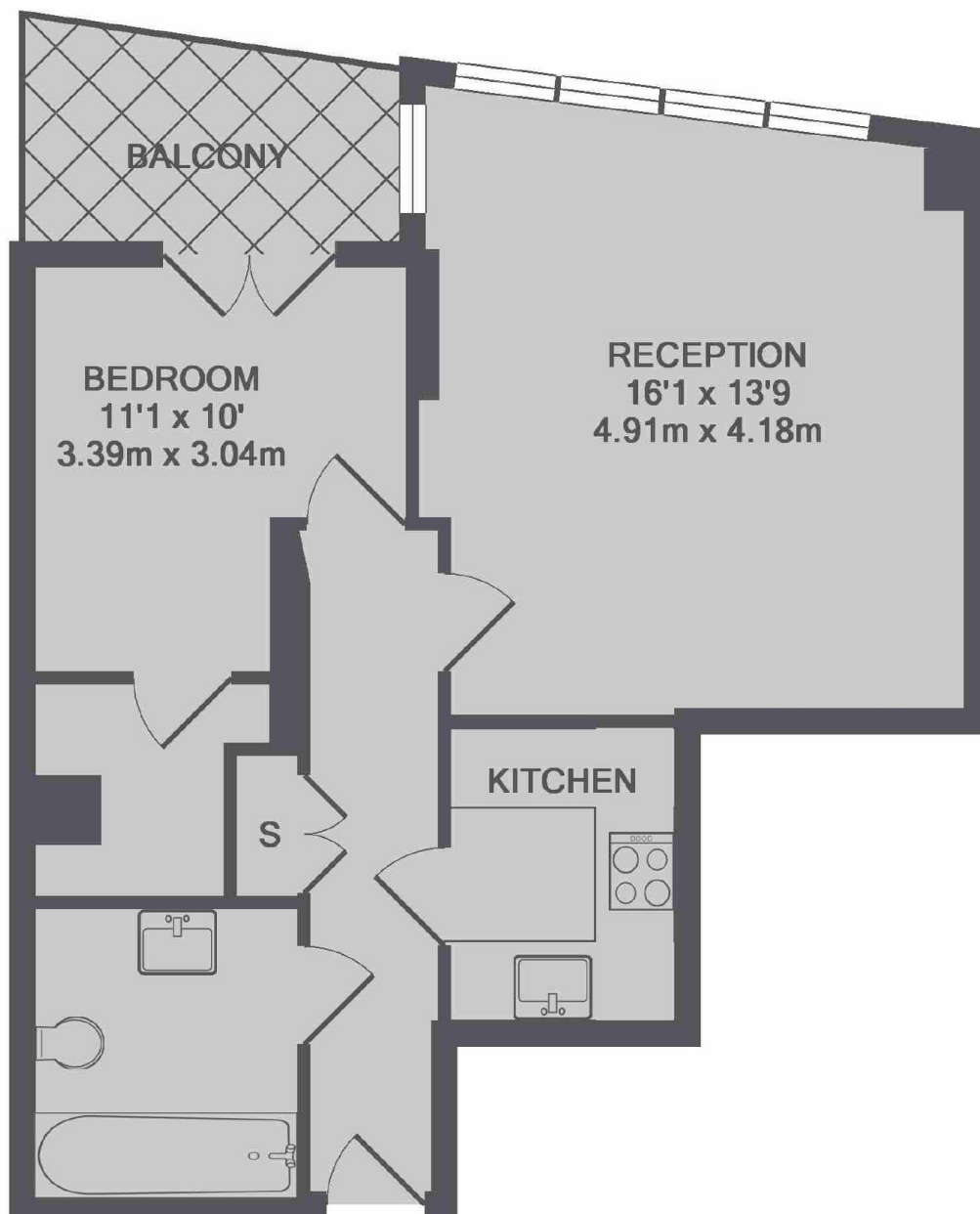
One bedroom apartment in New Providence Wharf with private balcony offer south west facing views of the River Thames.

Less than a mile from Canary Wharf cross rail shops and bars, Access to Canary Wharf Jubilee line with transport links into the City.

Features

- One Bedroom
- River Views
- Underfloor Heating
- 24 Hour Concierge
- Gym and Spa
- Swimming Pool

Fairmont Avenue, London, E14



TOTAL APPROX. FLOOR AREA 498 SQ.FT. (46.3 SQ.M.)