

Pan Peninsula Square, E14

£530 Per week

A well presented one bedroom apartment on the fourteenth floor of this prestigious development in Canary Wharf. This bright apartment has floor to ceiling windows, a large balcony and wooden flooring throughout.

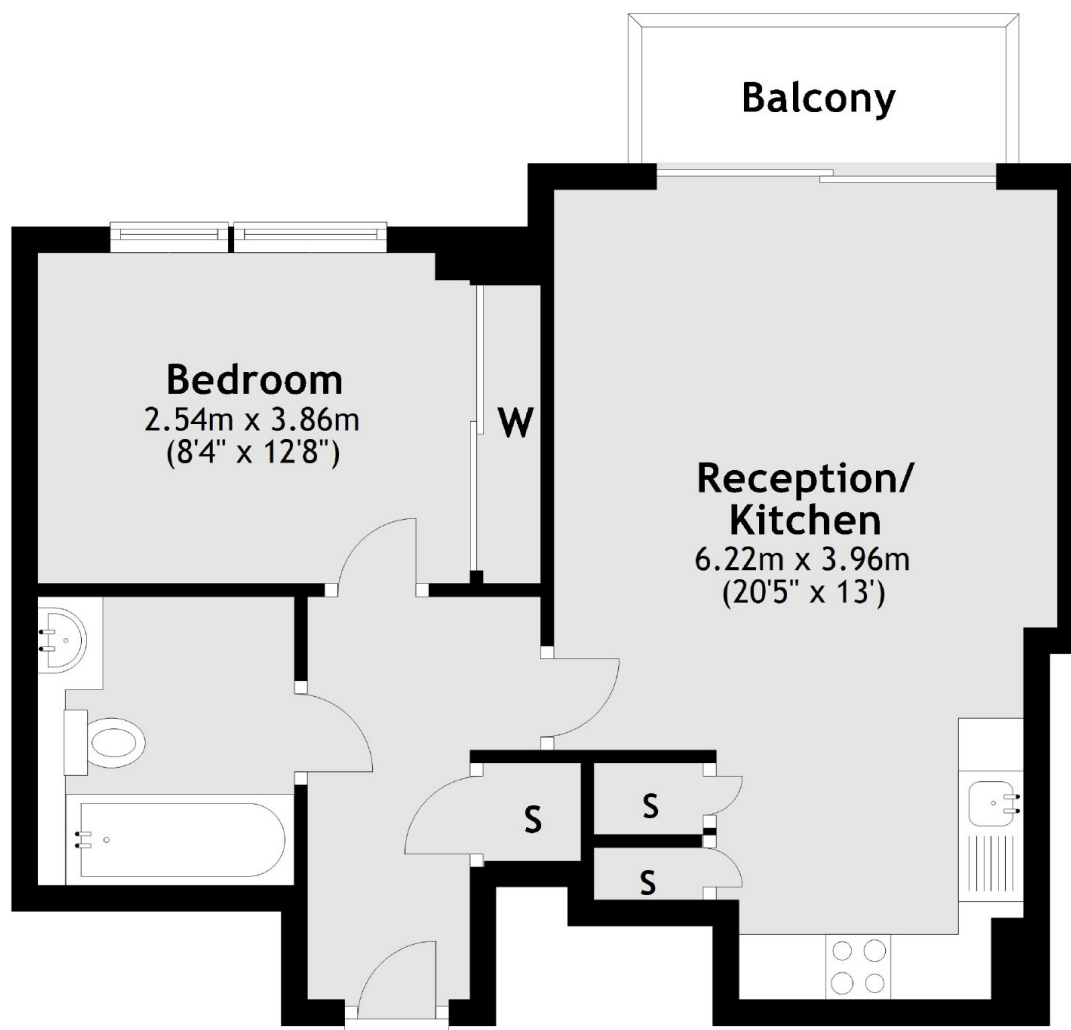
Pan Peninsula is moments away from the bars and restaurants of South Quay, including the popular Lotus Floating Restaurant.

Features

- One Bedroom
- One Bathroom
- Fourteenth Floor
- Bright Apartment
- Wooden Flooring
- Balcony

Pan Peninsula Square, London, E14

Fourteenth Floor



Main area: Approx. 42.7 sq. metres (459.5 sq. feet)

Plus balconies, approx. 3.2 sq. metres (34.6 sq. feet)