



Manchester Road, E14
£650,000

Dexters



Manchester Road, E14

Presented in immaculate condition and updated throughout is this two bedroom home offering 1021 Sq.Ft ample living space. Feature to include two balconies with river views, wooden flooring, underfloor heating with control access in each room two bathrooms, allocated parking, day porter and no onward chain.

Accommodation comprises of entrance hall, leading to second bedroom with built in wardrobes, master bedroom with access to balcony and en-suite shower room. The main bathroom is also off the hallway as well as the kitchen.

The open dual aspect reception has access to th main balcony. Water views are enjoyed from both balconies. The property also benefits from allocated parking.

Pierhead Lock is a riverside development moments from South Quay DLR Station and within easy reach of the shops, bars, restaurants of Canary Wharf which also has access to the Jubilee Line and Elizabeth Line.

Features

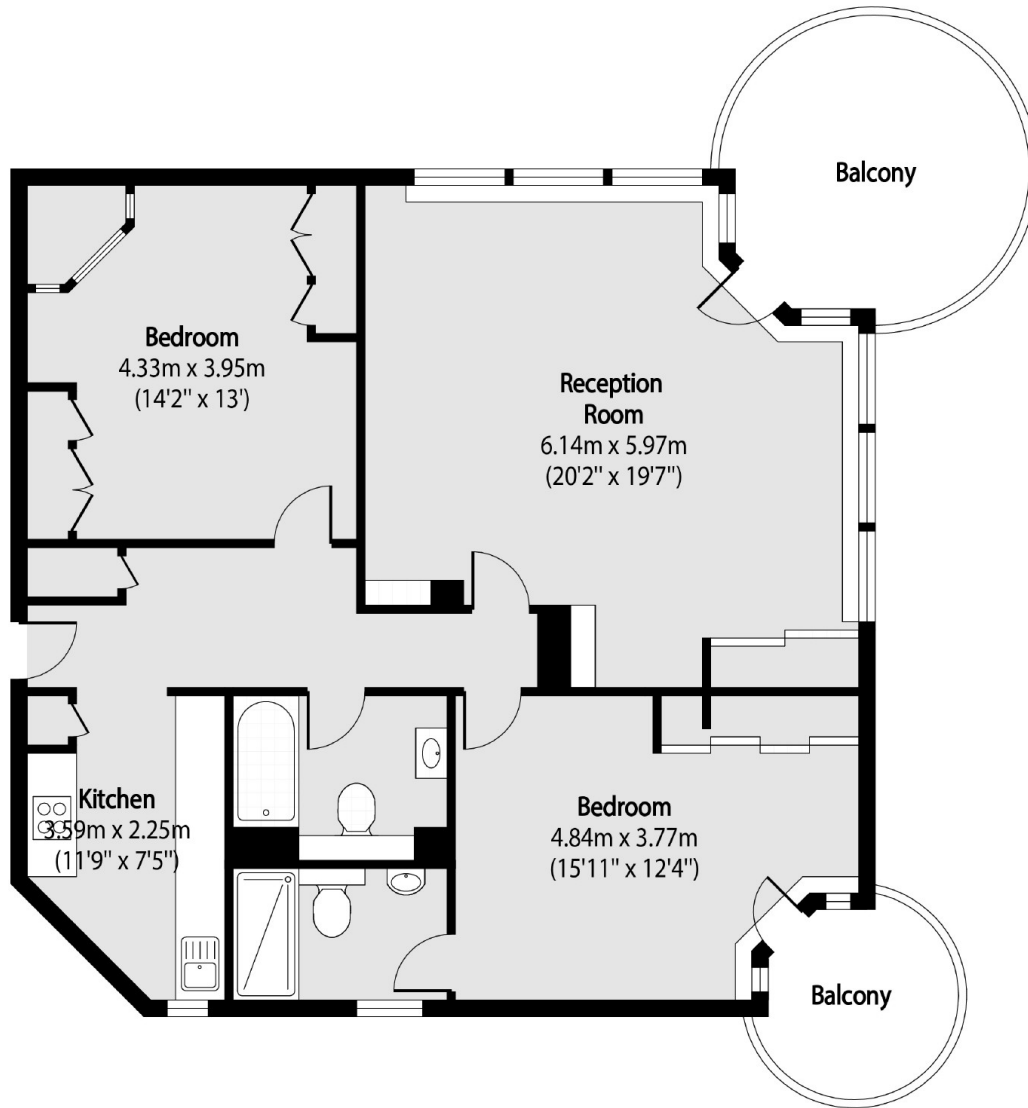
- 1021 Sq.Ft
- Balcony Total Areas 167 Sq.Ft
- River Views
- Allocated Parking
- Day Porter
- Offers above £650,000







Manchester Road,
London, E14



Total area (approx): 94.85 sq m (1021 sq. ft)

Balcony total area (approx): 15.54 sq m (167 sq. ft)