



Woolwich Manor Way, E16

£400,000

This impressive two bedroom split level home offers over 981 Sq.Ft of ample living space and is located within this converted period building within a gated development. Features to include allocated parking, high ceilings, communal gardens and no onward chain.

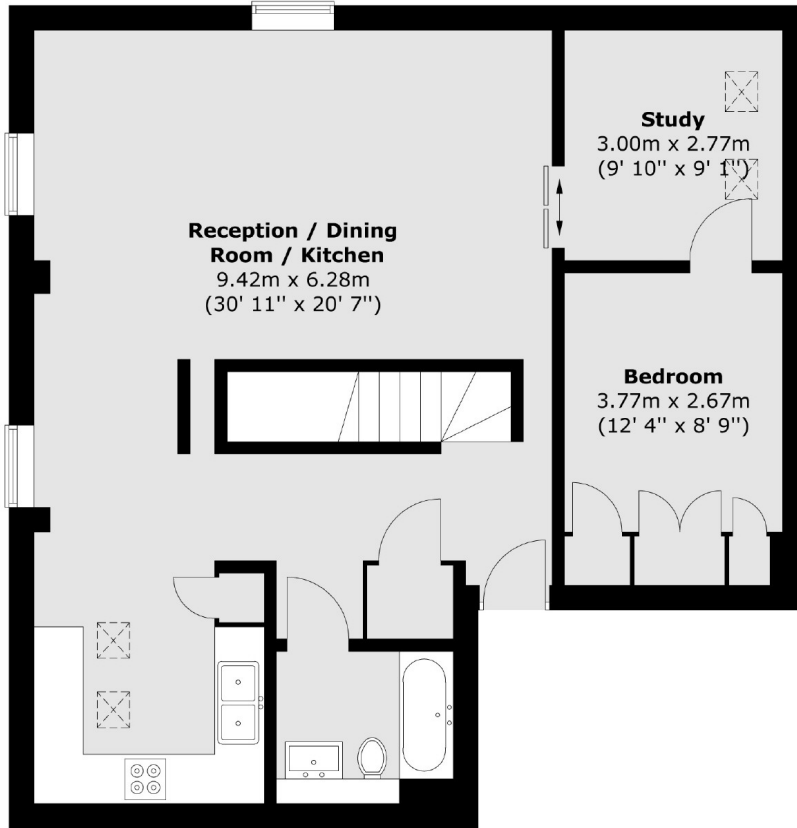
The renovation is ideally located for Royal Victoria Gardens and King George DLR station which provides good links to to Canary Wharf, and the City.

Features

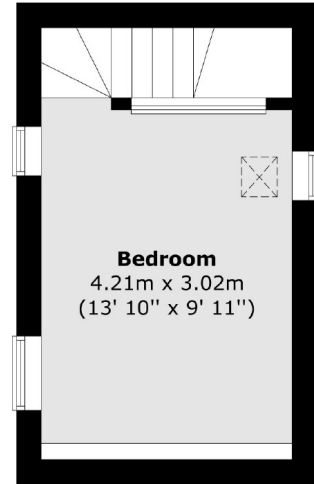
- 981 Sq.Ft
- Split Level Accommodation
- Allocated Parking
- Gated Access
- Communal Gardens
- No Onward Chain

Woolwich Manor Way,
London, E16

Second Floor



Third Floor



Total area (approx.) : 91.1 sq. m (981 sq. ft)