



## Fairmont Avenue, E14

£380 Per week

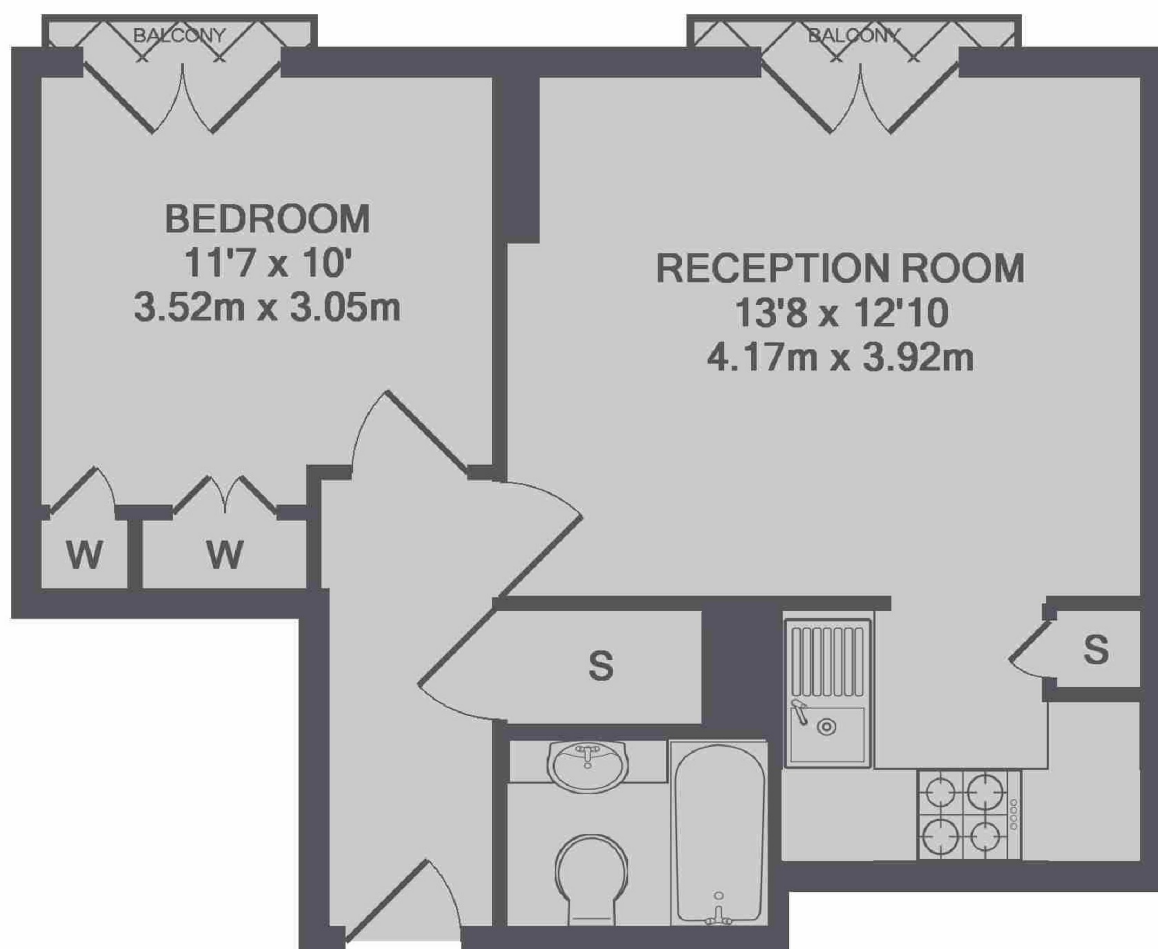
A bright one bedroom apartment on the second floor of this popular riverside development. This bright apartment has an open plan reception room, wooden flooring and underfloor heating.

New Providence Wharf is moments from the shops, bars and restaurants of Canary Wharf, including the popular Gun Pub.

### Features

- One Bedroom
- One Bathroom
- Wooden Flooring
- Floor to Ceiling Windows
- Residents Gym and Pool
- Concierge

# Fairmont Avenue, London, E14



TOTAL APPROX. FLOOR AREA 394 SQ.FT. (36.6 SQ.M.)