



## The Grange, SE1

£465,000

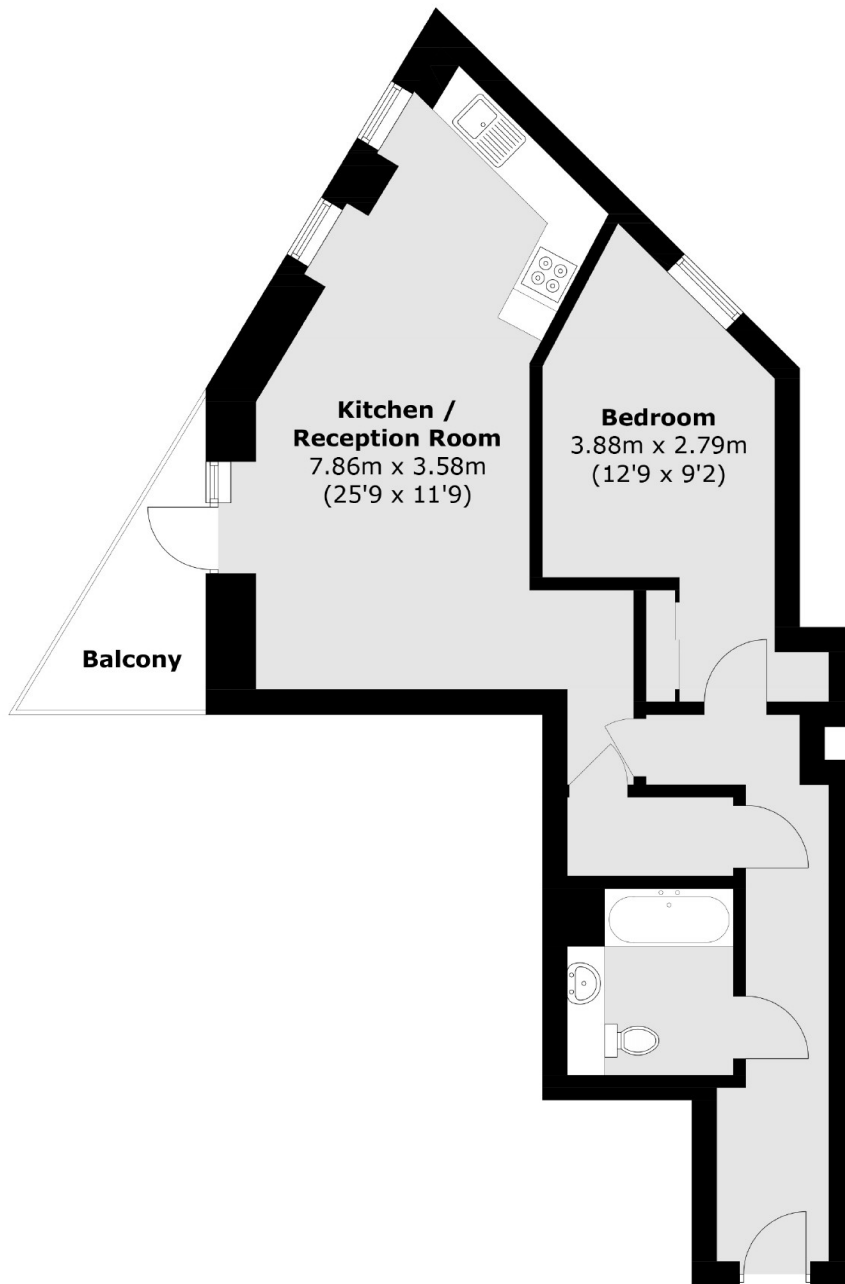
Situated within this sought after development, this one double bedroom flat is immaculately presented and boasts a large open plan kitchen- living space, modern bathroom and private balcony.

Corio House is moments from the vibrant Maltby Street Market and Bermondsey Street and is surrounded by artisan shops, cafés and delis. Bermondsey station is only 0.6 miles away and London Bridge is 0.8 miles away.

### Features

- One Double Bedroom
- Private Balcony
- Concierge
- Modern Gated Development
- Stunning Condition
- Bike Storage

# The Grange, London, SE1



Total area (approx.): 55.3 sq. m (595.2 sq. ft)  
Balcony (approx.): 4.3 sq. m (46.3 sq. ft)