



## Shad Thames, SE1

£900,000

Offering incredible views of Tower Bridge, The River and The City, this stunning apartment boasts a large open plan kitchen and living space, modern bathroom, ample storage plus secure parking and concierge facilities.

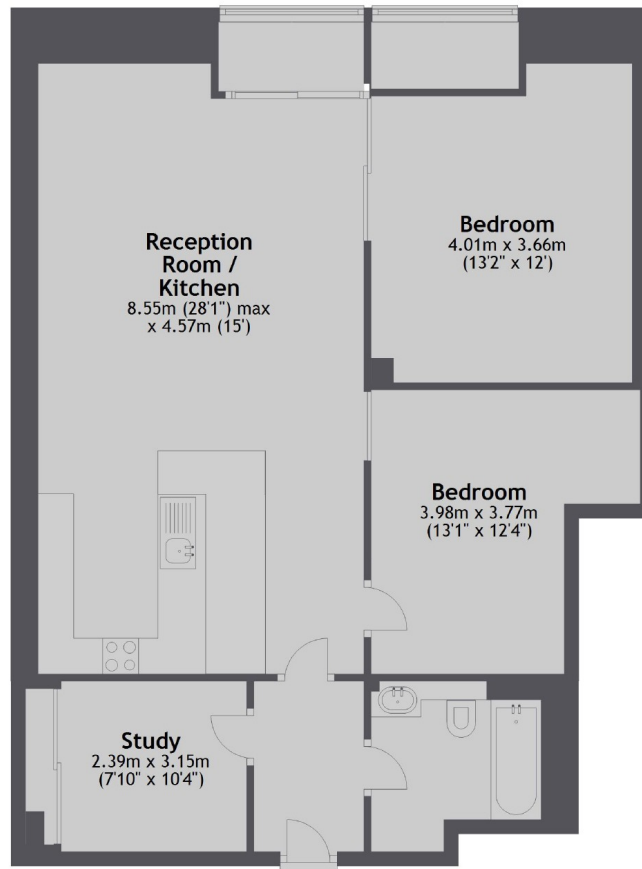
Anchor Brewhouse is located in the heart of Shad Thames and is surrounded by a wide range of shops and restaurants. London Bridge Station is just 0.3 miles away.

### Features

- Two Double Bedrooms
- Share of Freehold
- Stunning Views
- Concierge Facilities
- Riverside Development
- Secure Parking

# Shad Thames, London, SE1

## Third Floor



Total area: approx. 88.9 sq. metres (957.2 sq. feet)