



George Row, SE16

£550,000

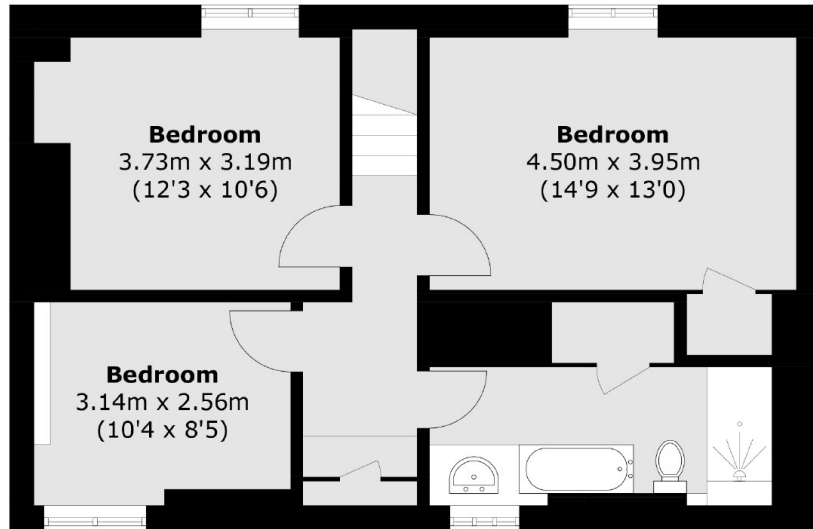
Situated moments from the river, this three double bedroom split level flat is immaculately presented and boasts a large living area, modern kitchen, ample storage, permit parking and views of The Shard. Offers in excess of £550,000.

Pickwick House is located only 0.2 miles from Bermondsey tube station and 0.6 miles from London Bridge. The development is surrounded by a wide range of shops, artisan food markets, restaurants and delis.

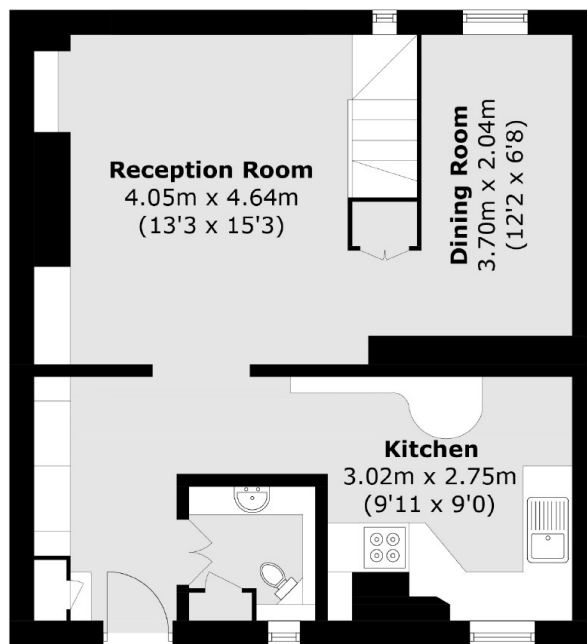
Features

- Three Double Bedrooms
- Chain Free
- Excellent Condition
- Parking Available
- Ample Storage
- Riverside Location
- Offers in excess of £550,000

George Row,
London, SE16



Fourth Floor



Third Floor

Total area (approx.): 102.3 sq. m (1,101.2 sq. ft)