



Rotherhithe Street, SE16

£875,000

Situated within a secure gated development, this four double bedroom house is in incredible condition and boasts a large open plan kitchen living space, 2.5 bathrooms, private garden and two roof terraces.

Stanton House is located moments from the river and is surrounded by riverside pubs, restaurants and shops. Canada Water, Rotherhithe station and Surrey Quays station are all within a mile away.

Features

- Four Double Bedrooms
- 2.5 Bathrooms
- Private Garden
- Two Roof Terraces
- Secure Development
- Concierge Facilities
- OIEO £875,000



Rotherhithe Street, SE16

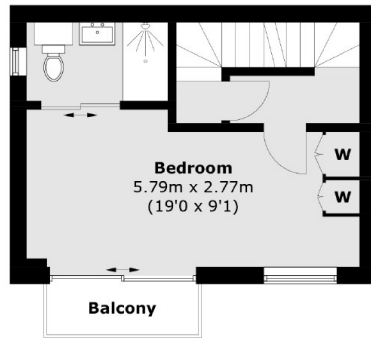
Arranged over four floors this bright and airy house is immaculately presented throughout. The ground floor offers a large private garden, open plan kitchen living space, additional reception room and downstairs WC.

The house boasts four large double bedrooms, one of which has an en-suite bathroom. On the first floor, there are two large double bedrooms with built in storage, a family bathroom and large roof terrace.

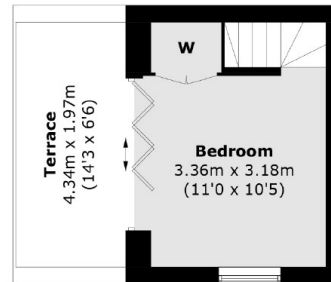
The second and third floor comprises of two more large bedrooms, one with en-suite, ample storage, private terrace and balcony.



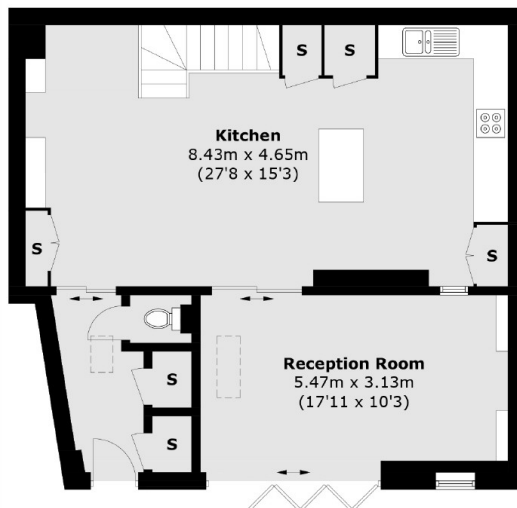
Rotherhithe Street, London, SE16



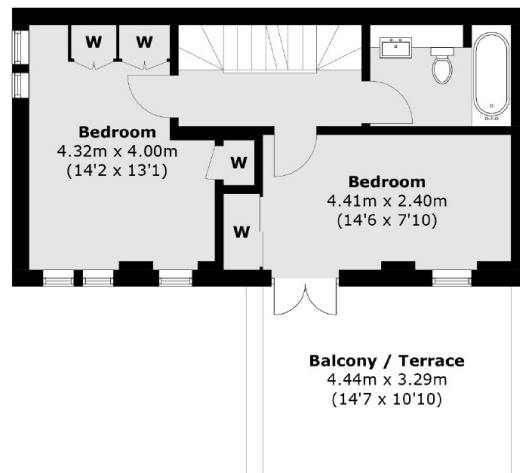
Second Floor



Third Floor



Ground Floor



First Floor

Total area (approx.): 144.2 sq. m (1,551.9 sq. ft)
Balcony / Terrace: 25.6 sq. m (275.5 sq. ft)