



## Violet Road, E3

£703 Per week

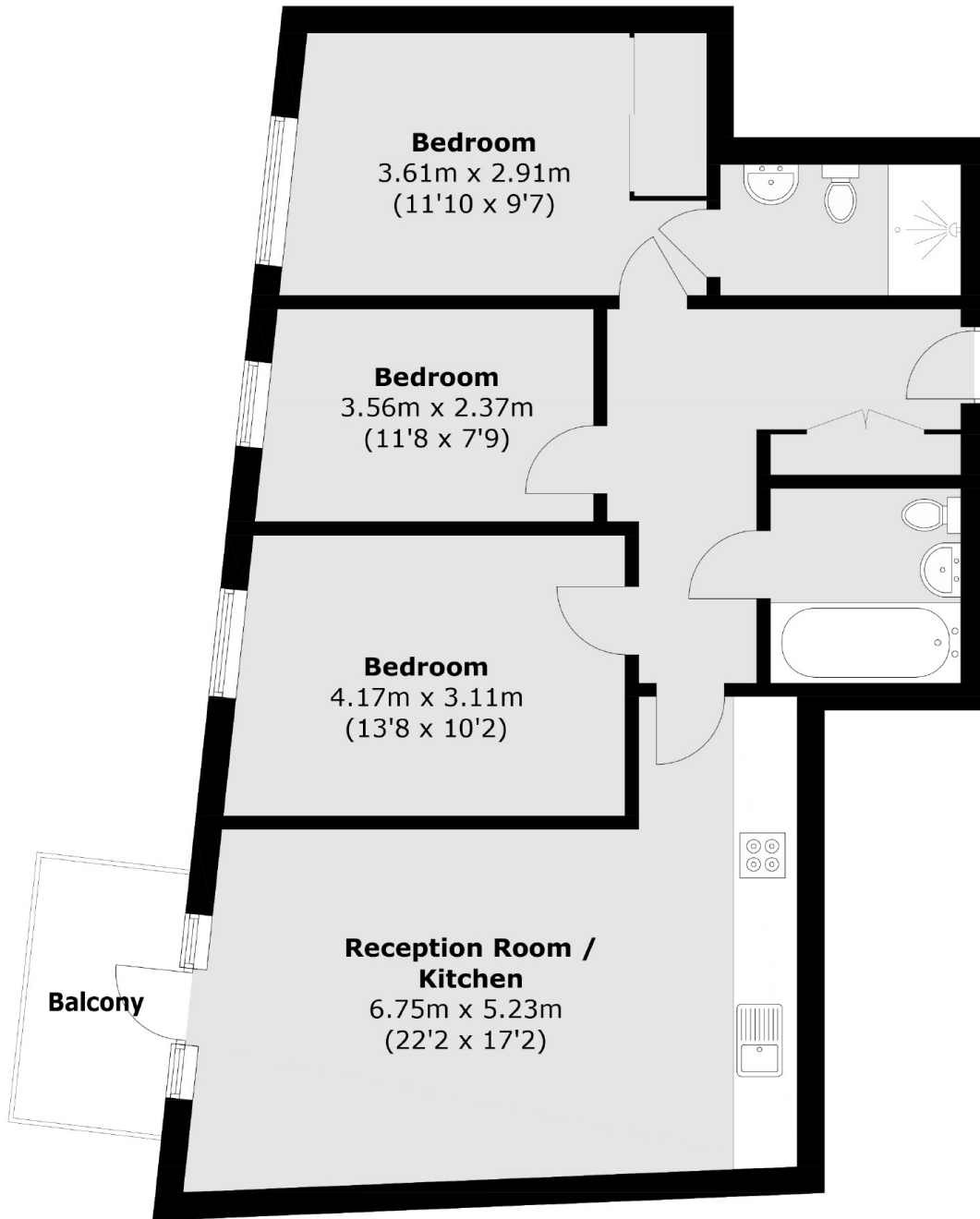
A well presented three bedroom property on the top floor of Charles Newell Court. Offering 930 sq/ft this property consists of open plan reception with wood floors leading and floor to ceiling windows, three double bedrooms, two bathrooms and a private balcony overlooking the communal gardens.

Located a short walk from Devons Road DLR Station, which has convenient access to Canary Wharf, Westfields, Stratford and The City. Barry Blandford Way also offers various local amenities including a listed pub and workspace studios.

### Features

- Three Double Bedrooms
- Two Bathrooms
- Furnished
- Air Conditioning
- Private Balcony
- Dual Aspect Reception

# Violet Road, London, E3



Total area (approx.): 86.2 sq. m (928 sq. ft)  
Balcony : 4.8 sq. m ( 52 sq. ft)