



Fairmont Avenue, E14

£657 Per week

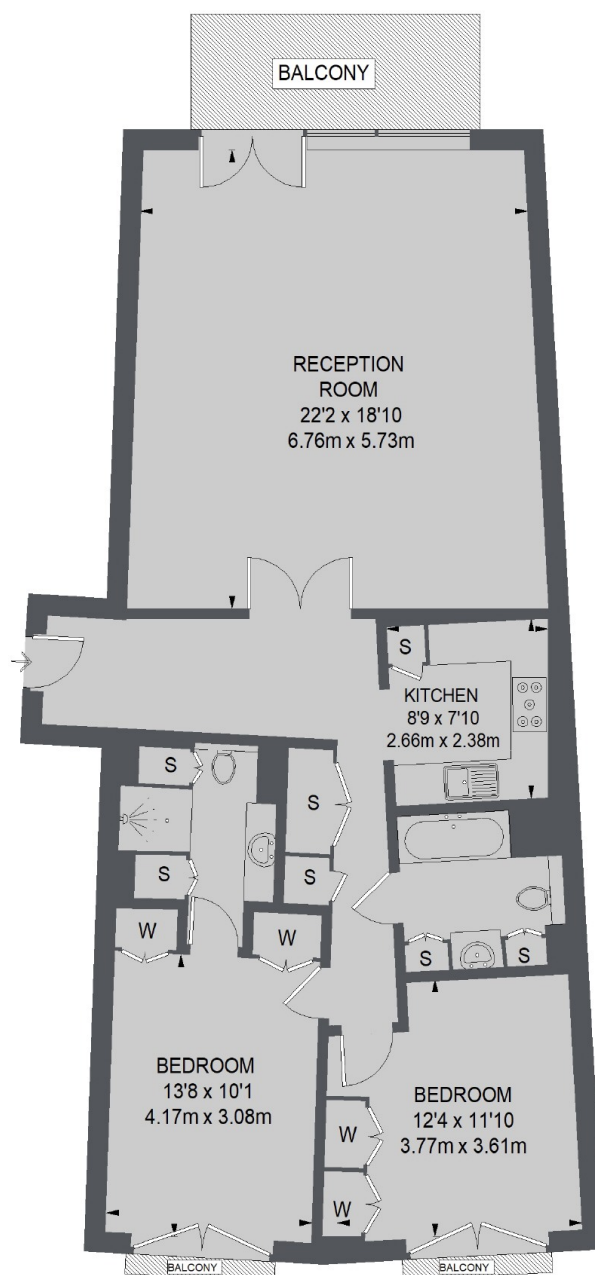
An exceptionally large two bedroom apartment on the eight floor (with lift) of this superior development. This river facing apartment has floor to ceiling windows, wooden flooring and on-site swimming pool and gym.

New Providence Wharf is moments from the shops, bars and restaurants of Canary Wharf, including the popular Le Relais de Venise.

Features

- Two Bedrooms
- Two Bathrooms
- Wooden Flooring
- Balcony
- Stunning Views
- Parking Available

Fairmont Avenue, London, E14



EIGHTH FLOOR

TOTAL APPROX. FLOOR AREA
1123 SQ. FT. (104.33 SQ. M.)