



Old Jamaica Road, SE16

£850,000

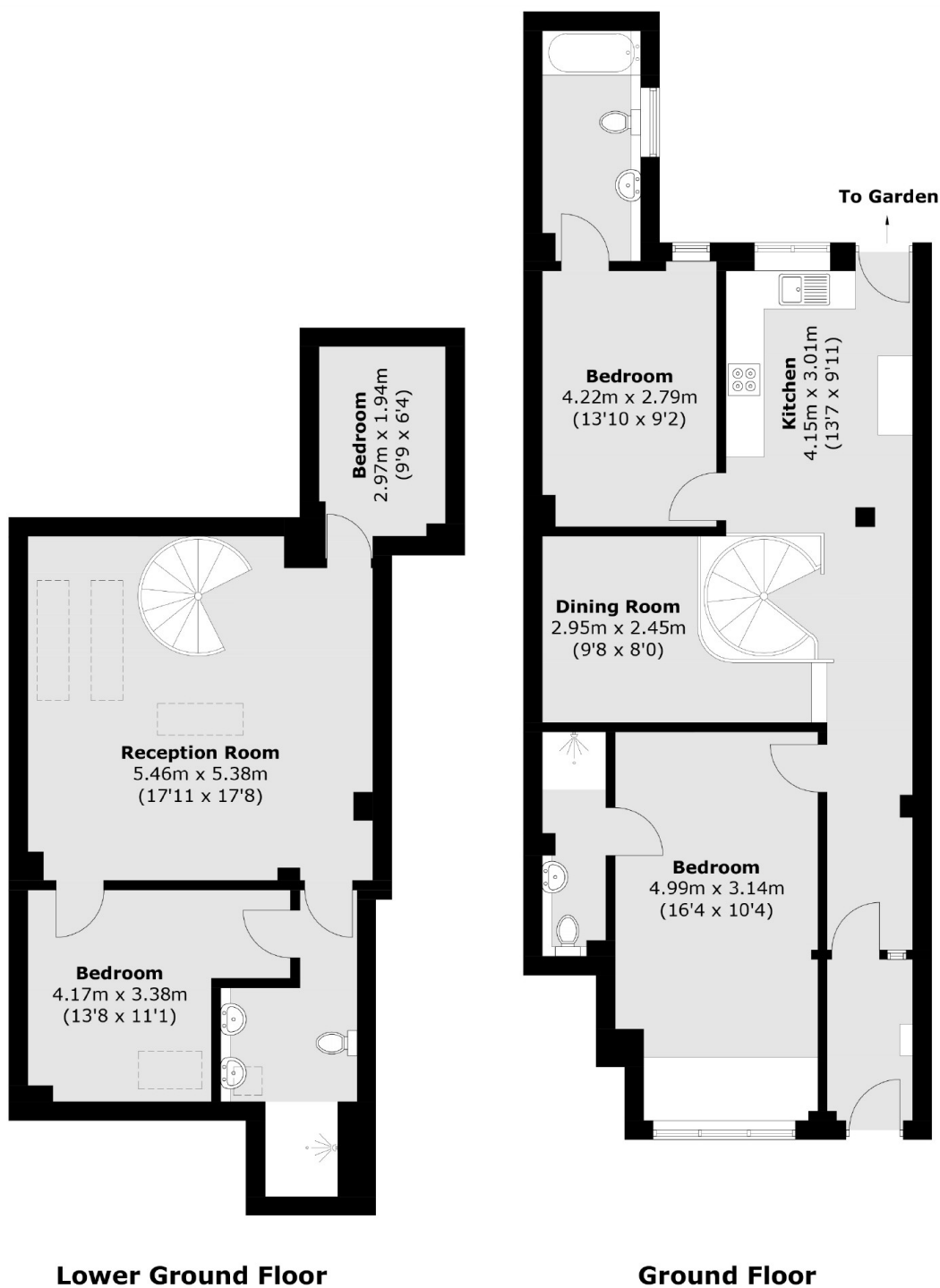
Arranged over two floors, this split level three double bedroom flat is immaculately presented throughout and boasts three bedrooms, a large open plan kitchen, living room, additional reception room, ample storage and a private garden.

Lilliput Hall is surrounded by a wide range of shops, cafés, artisan delis and trendy food markets. Bermondsey station is just 0.3 miles away and London Bridge station is 0.9 miles away.

Features

- Three Double Bedrooms
- Three Bathrooms
- Private Garden
- Share Of The Freehold
- Chain Free
- Fantastic Location

Old Jamaica Road, London, SE16



Total area (approx.): 137.7 sq. m (1,482.1 sq. ft)