



Providence Square, SE1 £550,000

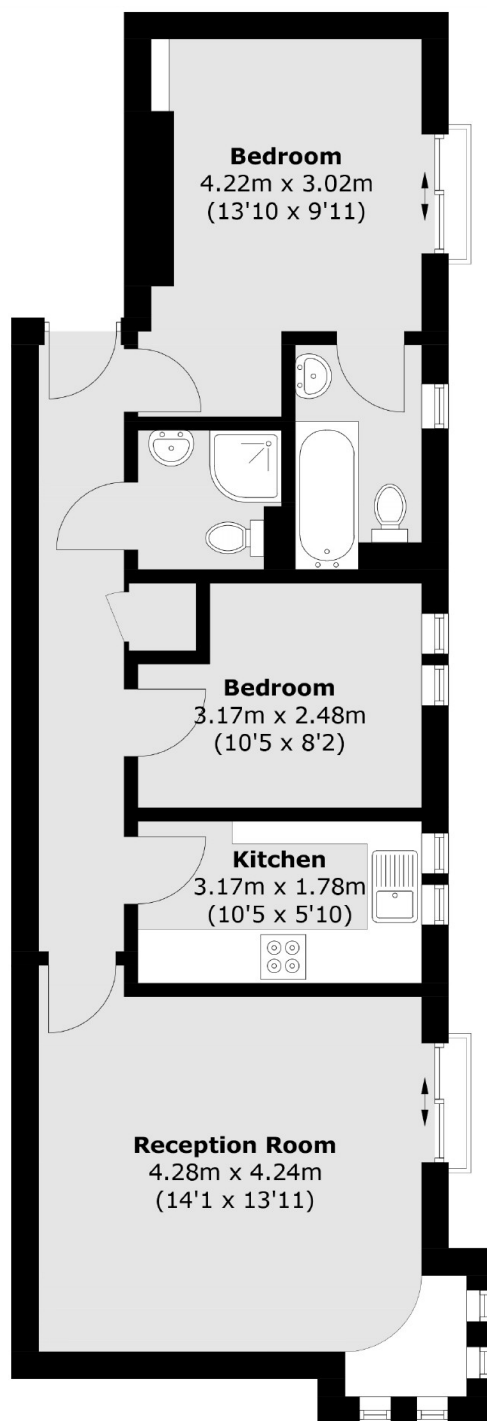
Situated within this sought after gated development, this two double bedroom flat is immaculately presented and boasts a large living space, fully refurbished kitchen and two bathrooms, allocated parking, communal Japanese Water Garden, gym and 24 hour concierge facilities.

Providence Square is located moments from the river and is only 0.4 miles from Bermondsey station and 0.7 miles from London Bridge station. A wide range of restaurants, cafés, artisan delis and trendy food markets are moments away.

Features

- Two Bedrooms
- Two Bathrooms
- Excellent Condition
- Concierge & Gym Facilities
- Allocated Parking Space
- Fantastic Location
- OIEO £550,000

Providence Square, London, SE1



Total area (approx.): 59.4 sq. m (639.4 sq. ft)