



## Wards Place, E14

£2,307 Per week

A rarely available three bedroom penthouse on the fifty third floor of this prestigious development. Arranged over two levels, this duplex apartment has been furnished to a high standard with an open plan reception room, private balcony and underground parking.

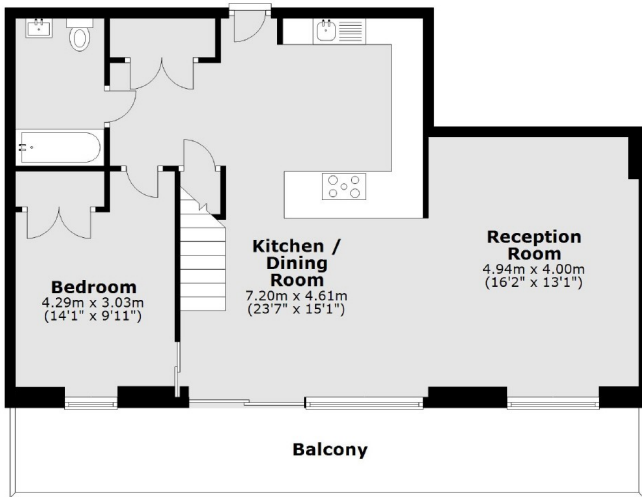
The Wardian is within walking distance of the shops, bars and restaurants of Canary Wharf, including the former rum warehouse Rum and Sugar.

### Features

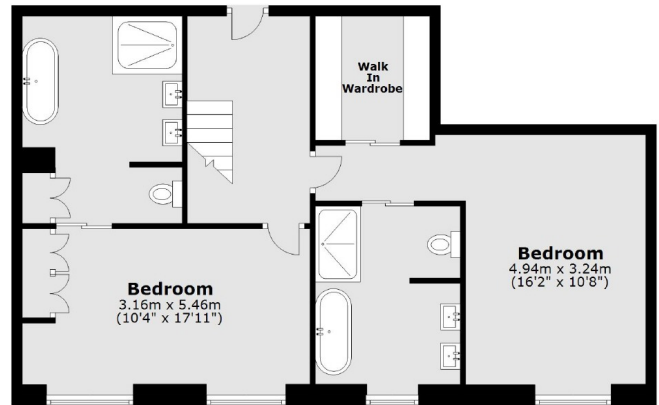
- Three Bedrooms
- Three Bathrooms
- Penthouse
- Open Plan Living
- Climate Cooling
- Secure Parking

# Wards Place, London, E14

53rd Floor



54th Floor



Main area: Approx. 151.8 sq. metres (1634.1 sq. feet)  
Plus balconies, approx. 20.3 sq. metres (218.1 sq. feet)