



Maynards Quay, E1W

£549,999

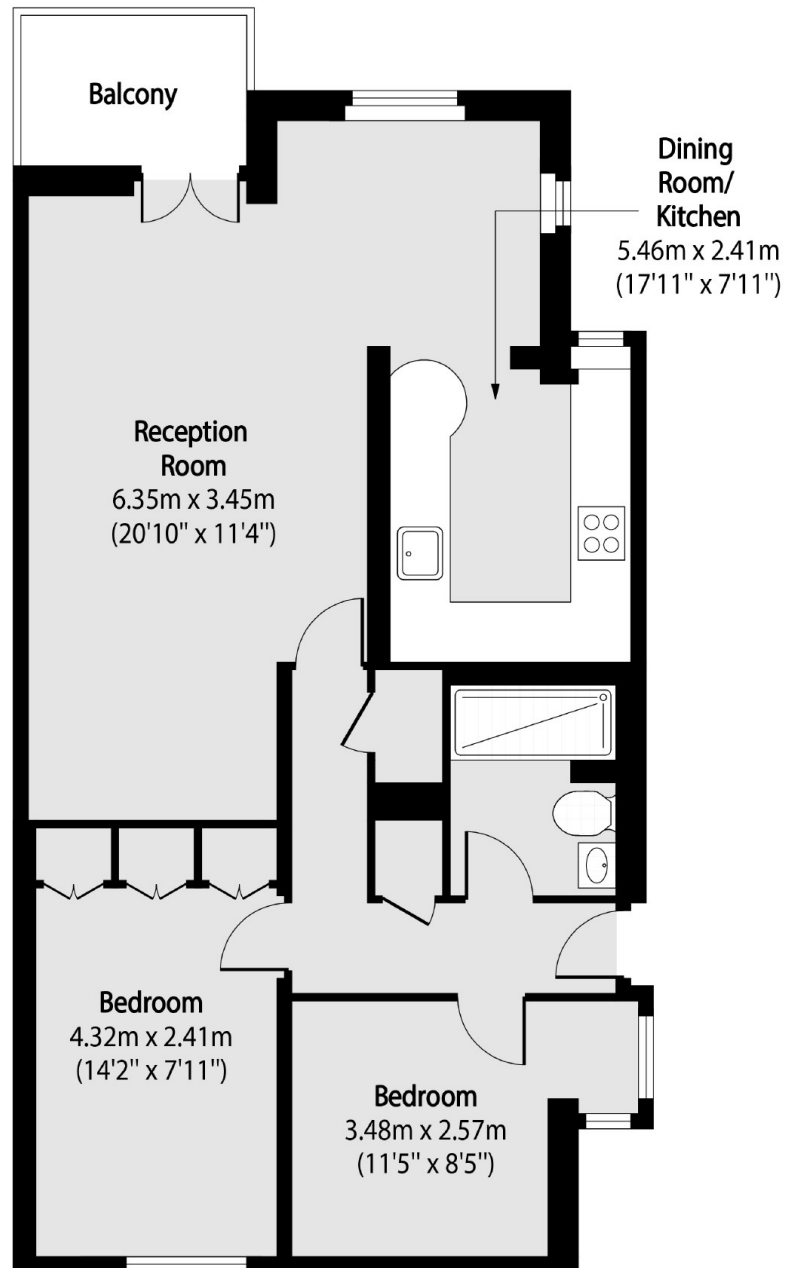
Offering water views with Canary Wharf in the distance is this two bedroom home located within in a gated development. Features to include private balcony, re-fitted bathroom-re-fitted kitchen and no onward chain.

Maynards Quay is between Shadwell DLR Station and Wapping Overground station which both offer good links to the City and Canary Wharf.

Features

691 Sq.Ft
38 Sq.Ft Additional Balcony
Two Bedrooms
Basin and Canary Wharf Views
Extended Lease
No Onward Chain

Maynards Quay, London, E1W



Total area (approx): 64.20 sq m (691 sq. ft)

Balcony total area (approx): 3.53 sq m (38 sq. ft)