



## Northiam Street, E9

£700,000

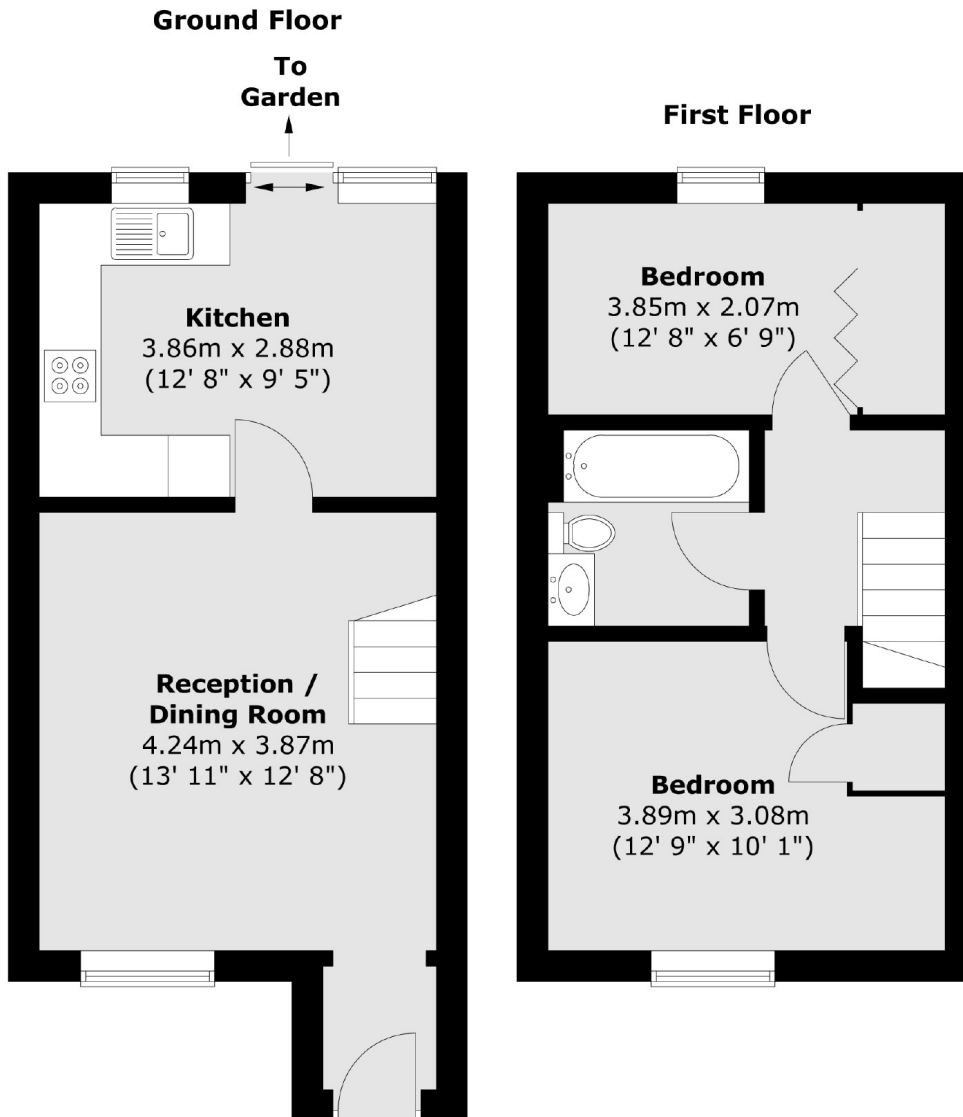
A two double bedroom terrace house with a west facing garden. This property is split over two floors, with a living room and kitchen on the ground floor and the bathroom and two bedrooms with dual aspect views of the Regents Canal on the top floor. This property is being sold chain free.

Located off a one way street, this property is located half a mile from Victoria Park Village and Broadway Market. The regents canal can be accessed 200 yards away with easy access to both. The nearest station is Bethnal Green on the Central Line.

### Features

- Offers In Excess Of
- Chain Free
- Two Double Bedrooms
- Private Garden
- Views of Regents Canal
- Cul-De-Sac
- Parking Available

# Northiam Street, London, E9



Total area (approx.) : 57.7 sq. m (621 sq. ft)