



Surrey Row, SE1

£900,000

A rarely available, almost 1,600 sq ft, split level property, currently set out as an office space, over three floors, with two kitchenettes, secure off-street parking and the potential to be converted to a stunning two or three bedroom apartment.

Surrey Row runs between Blackfriars Road & Great Suffolk Street in central SE1, 0.2 miles from Southwark & 0.5 miles from Waterloo, with London Bridge, Borough Market, Flat Iron Square & the South Bank all in easy reach.

Features

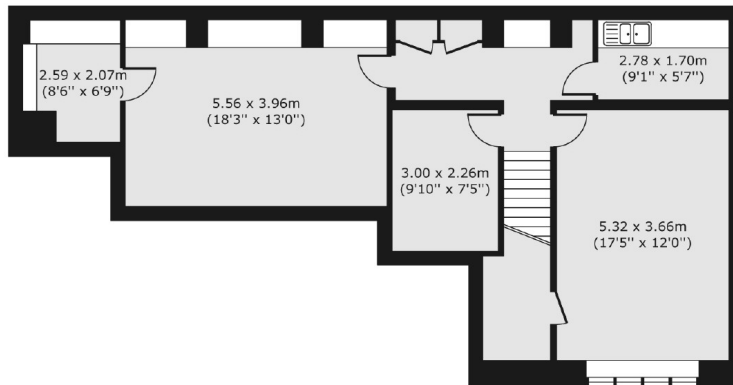
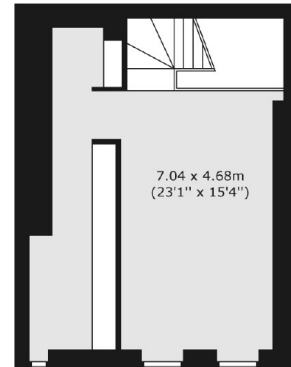
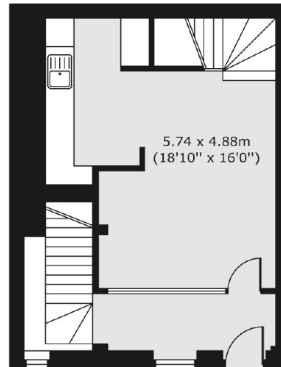
- Triplex Apartment
- Potential for 2-3 Bedrooms
- Almost 1,600 sq ft
- Secure Off-Street Parking
- Very Central Location
- Cash Buyers Only

Surrey Row, London, SE1

Lower Ground Floor

Raised Ground Floor

First Floor



Total area (approx.) 146.34 sq. m (1,575 sq. ft)