



Surrey Row, SE1

£1,100,000

A rarely available, over 1,700 sq ft, split level property, currently set out as an office space, over three floors, with its own front door, three WCs, secure off-street parking and the potential to be converted to a stunning two or three bedroom apartment.

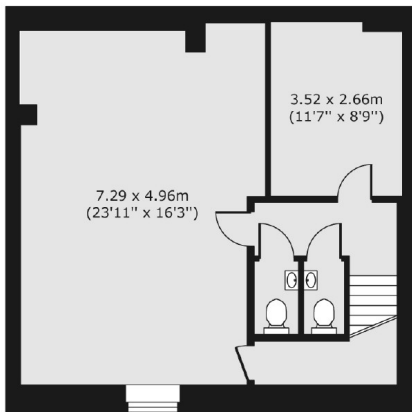
Surrey Row runs between Blackfriars Road & Great Suffolk Street in central SE1, 0.2 miles from Southwark & 0.5 miles from Waterloo, with London Bridge, Borough Market, Flat Iron Square & the South Bank all in easy reach.

Features

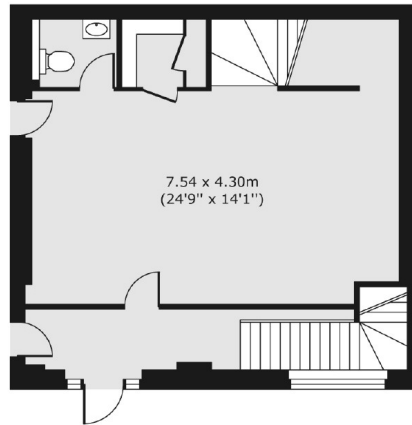
- Triplex Apartment
- Potential for 2-3 Bedrooms
- Over 1,700 sq ft
- Secure Off-Street Parking
- Very Central Location
- Cash buyers Only

Surrey Row, London, SE1

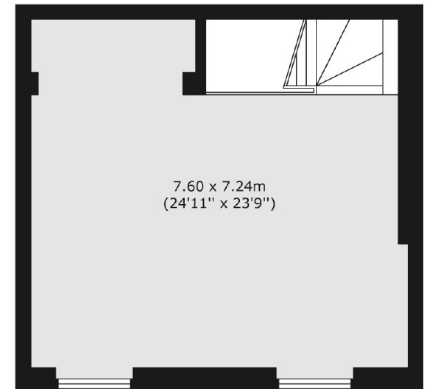
Lower Ground Floor



Raised Ground Floor



First Floor



Total area (approx.) 161.88 sq. m (1,742 sq. ft)