



Blackfriars Road, SE1

£650,000

An immaculately presented almost 800 sq ft high spec modern apartment with a large open plan living space, private winter garden, three piece bathroom, ample storage and a generous double bedroom.

Located on Blackfriars Road, with numerous amenities in the vicinity on Bankside, a vibrant social scene, boutique restaurants, bars and cafés. There is easy access to Southwark, Blackfriars Station and the City is just a hop over the bridge.

Features

- Open Plan Living
- Winter Garden
- Residents' Gym
- 24 Hour Concierge
- Panoramic Residents' Terrace
- Valid EWS1 Form



Blackfriars Road, SE1

Conquest Tower is one of SE1's premier new developments, finished to a very high specification, with a 24 hour concierge, residents' gym and a panoramic roof terrace.

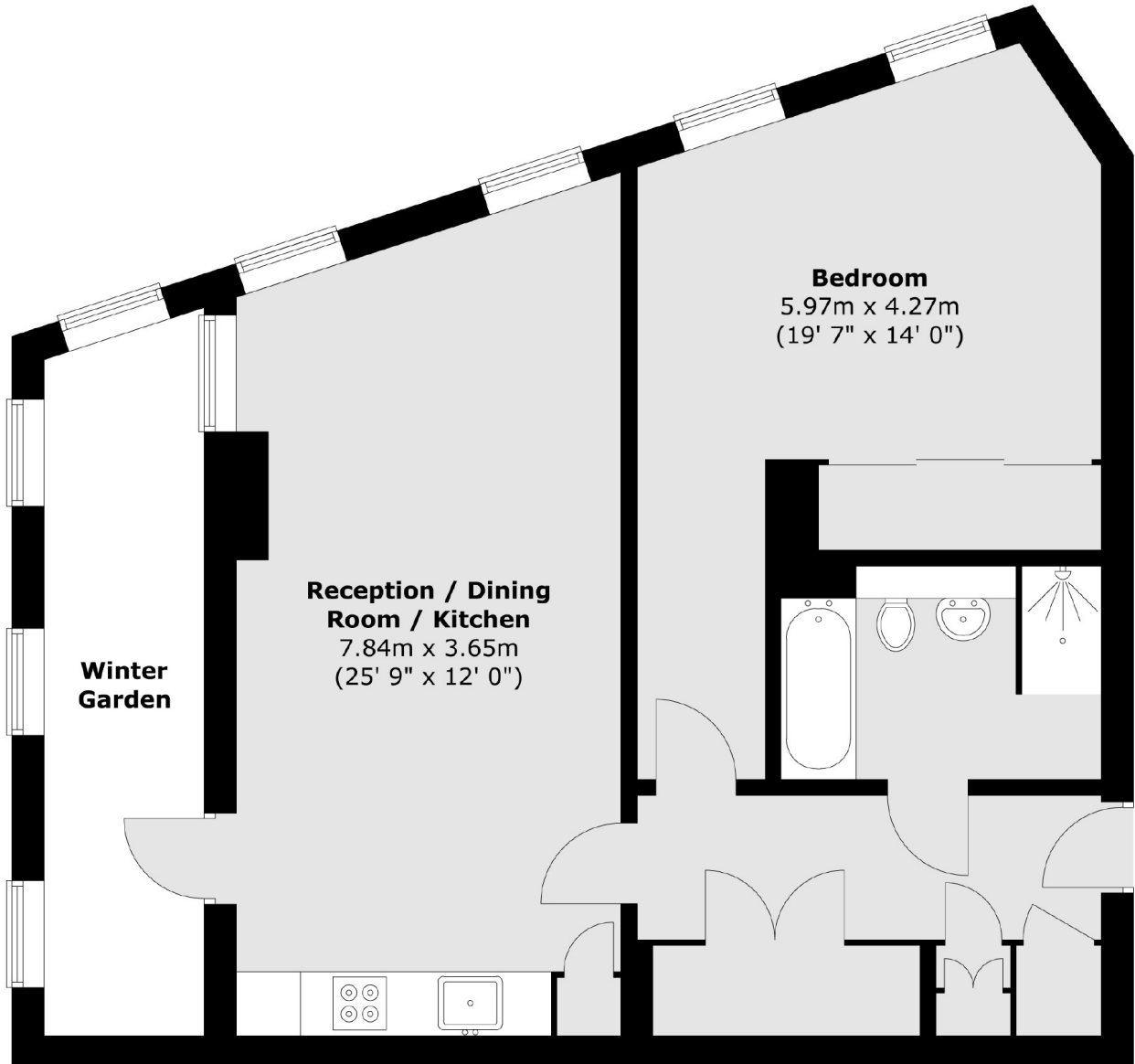
The apartment is a fantastic size with a generous double bedroom, large bathroom, one of which is en-suite, a sizeable open plan living area and a private winter garden.

There is a great flow to the property and fantastic light due to the floor to ceiling windows and southerly aspect, with light starting in the bedrooms and the sun setting on the side of the main living space and winter garden.



Blackfriars Road,
London, SE1

First Floor



Total area (approx.) : 66.5 sq. m (716 sq. ft)
Total winter garden area (approx.) : 9.9 sq. m (107 sq. ft)