

Westferry Road, E14 £475,000

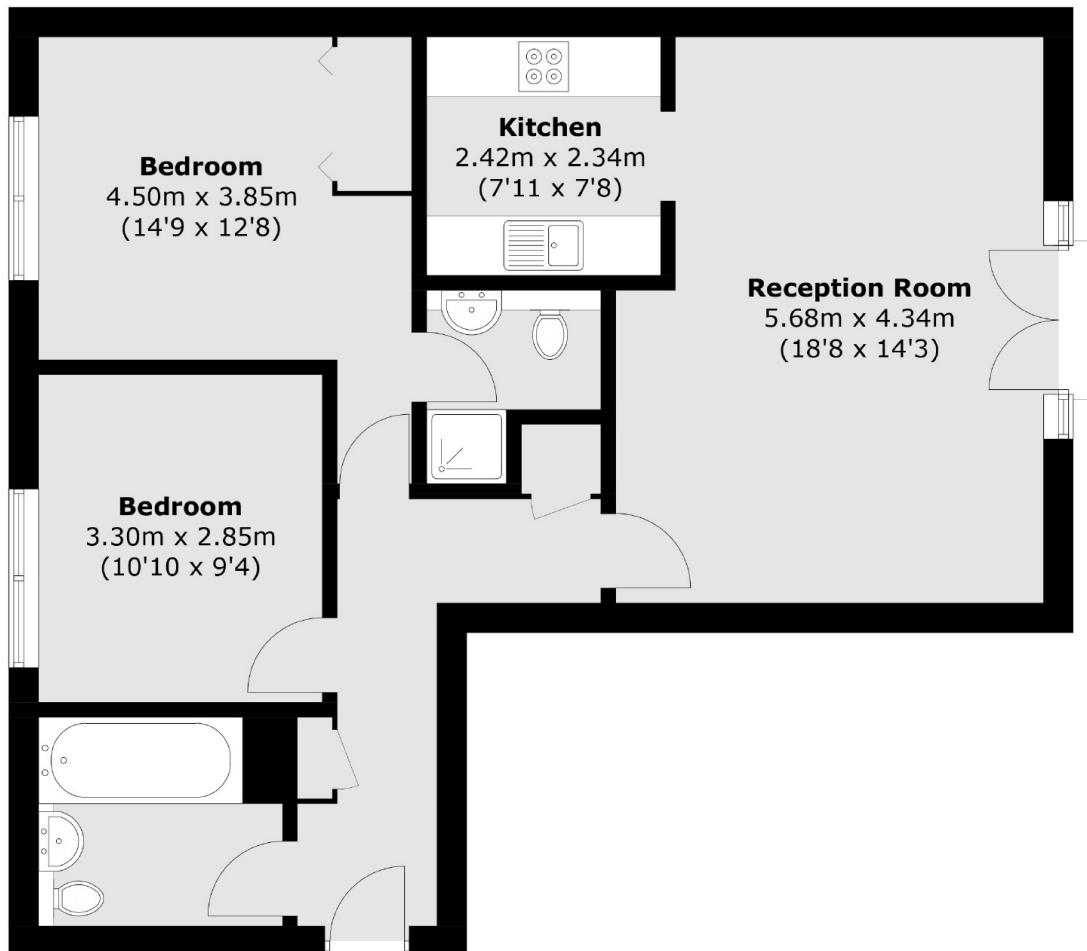
Offering river and city views is this top floor two double bedroom home located in the popular Millennium Harbour. Features to include re-fitted kitchen, reception room with Juliette balcony, secure allocated parking, concierge service and residents leisure facilities.

Edison Building is located within the riverside development Millennium Harbour and is 0.5 miles from Canary Wharf which provides good travel links and a wide selection of restaurant and bars.

Features

- River And City Views
- Two Double Bedrooms
- Two Bathrooms
- Re-Fitted Kitchen
- Concierge Service
- Residents Leisure Facilities
- Guide Price £475,000-£500,000

Westferry Road,
London, E14



Total area (approx.): 70.9 sq. m (763.2 sq. ft)