



Wharf Place, E2

£550,000

On Regents Canal, this warehouse conversion offers high ceilings, two double bedrooms and an open plan kitchen and living space. This property also benefits from canal views and a parking space.

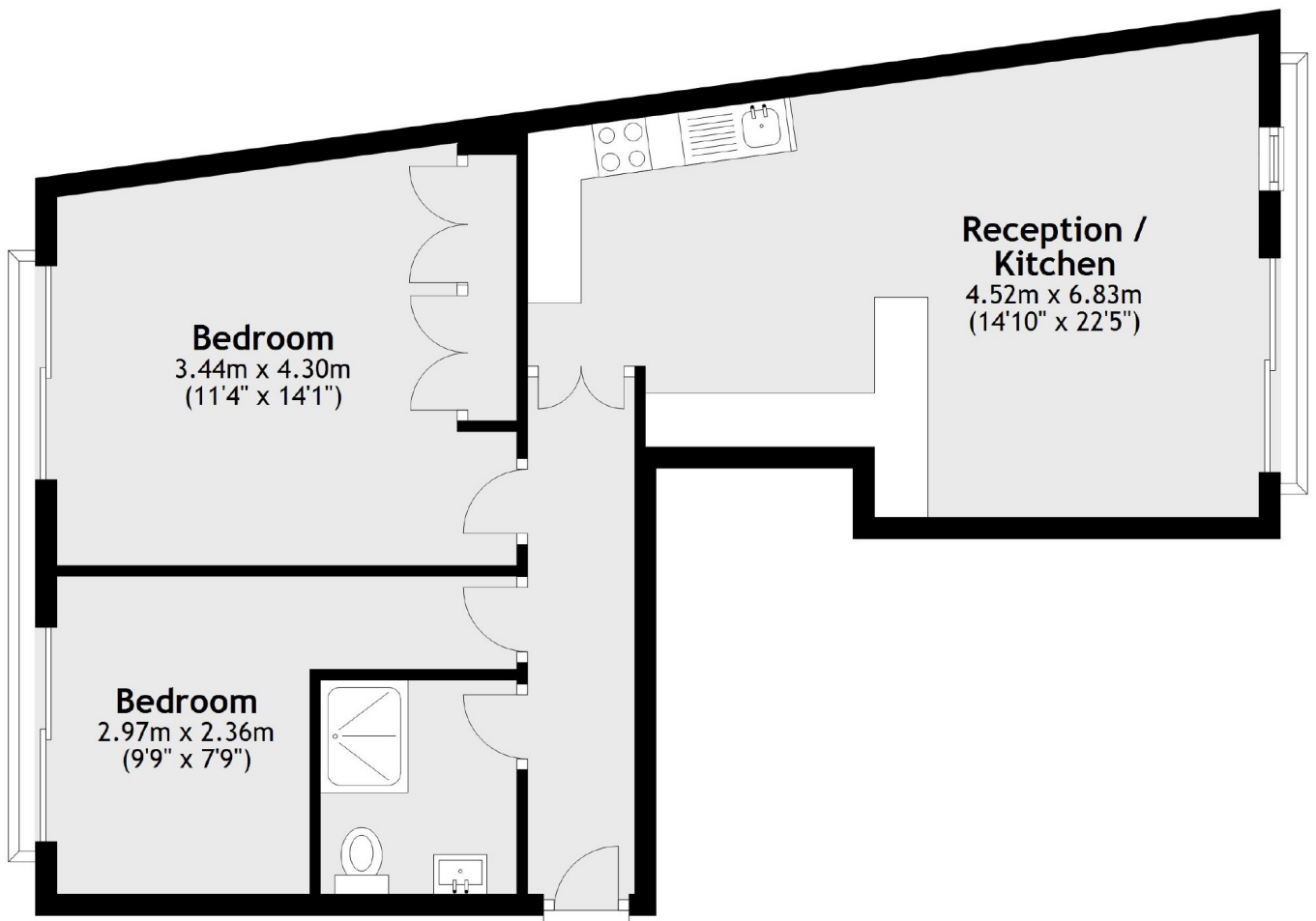
Ideally located at the bottom of the popular Broadway Market, with an abundance of local amenities. Also nearby green spaces such as London Fields and Victoria Park. Easy transport links into the City, with Bethnal Green Underground Station and London Fields Overground just a short walk away.

Features

Offers In Excess Of
Share Of Freehold
Warehouse Conversion
Juliet Balcony
Parking Space
Broadway Market
London Fields

Wharf Place, London, E2

Fourth Floor



Total area: approx. 59.7 sq. metres (642.5 sq. feet)