



Turnberry Quay, E14

£475,000

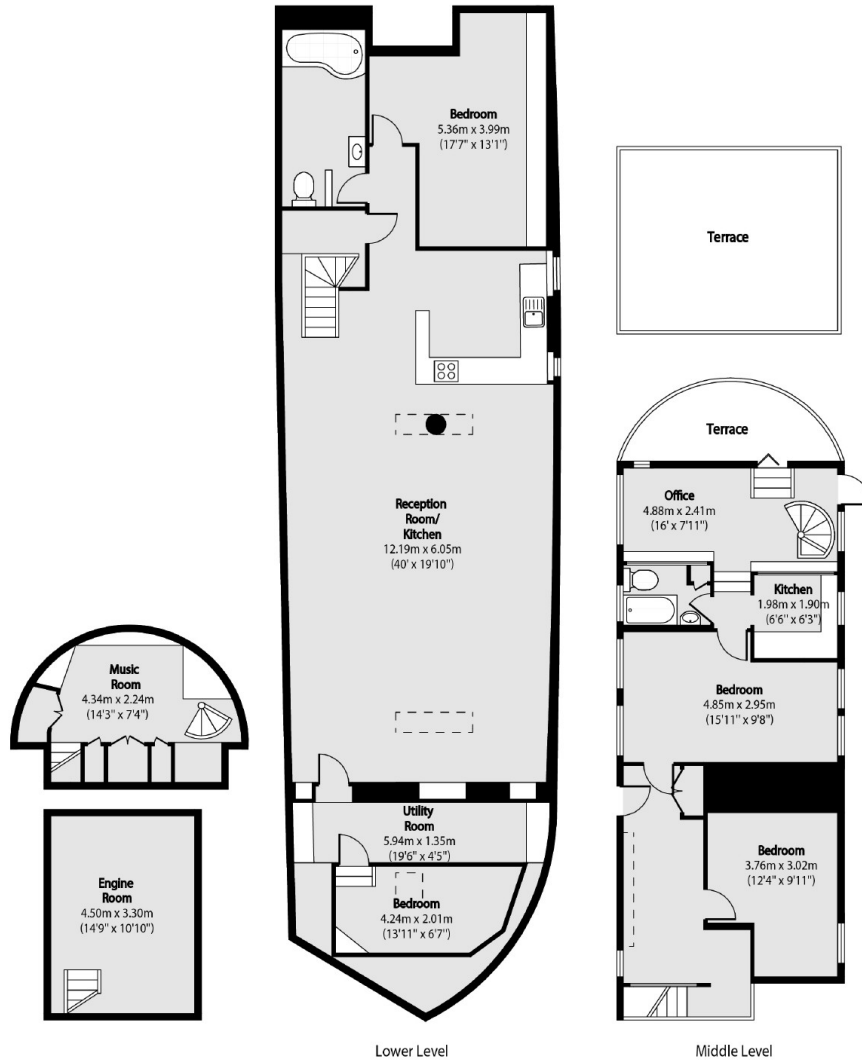
A unique 1920's Dutch barge from Rottenberg which has been converted to a high standard by the current owners docked in Canary Wharf. Features to include to four bedrooms, two bathrooms, large open plan living area and oil central heating with cast iron radiators.

Nieuwe Zorg is docked in Turnberry Quay which makes this an ideal purchase for City and Waterside living. Canary Wharf offers a wide selection of restaurants, bars and has a verity of transport links to include the Jubilee line, DLR Stations and The Elizabeth line..

Features

2299 Sq.Ft
291 Sq.Ft Terrace
Four/Five Bedrooms
Two Bathrooms
Oil Central Heating
Docked in Canary Wharf

Turnberry Quay, London, E14



Total area (approx): 213.58 sq m (2299 sq. ft)

Terrace total area (approx): 27.03 sq m (291 sq. ft)