



Westferry Road, E14

£400,000

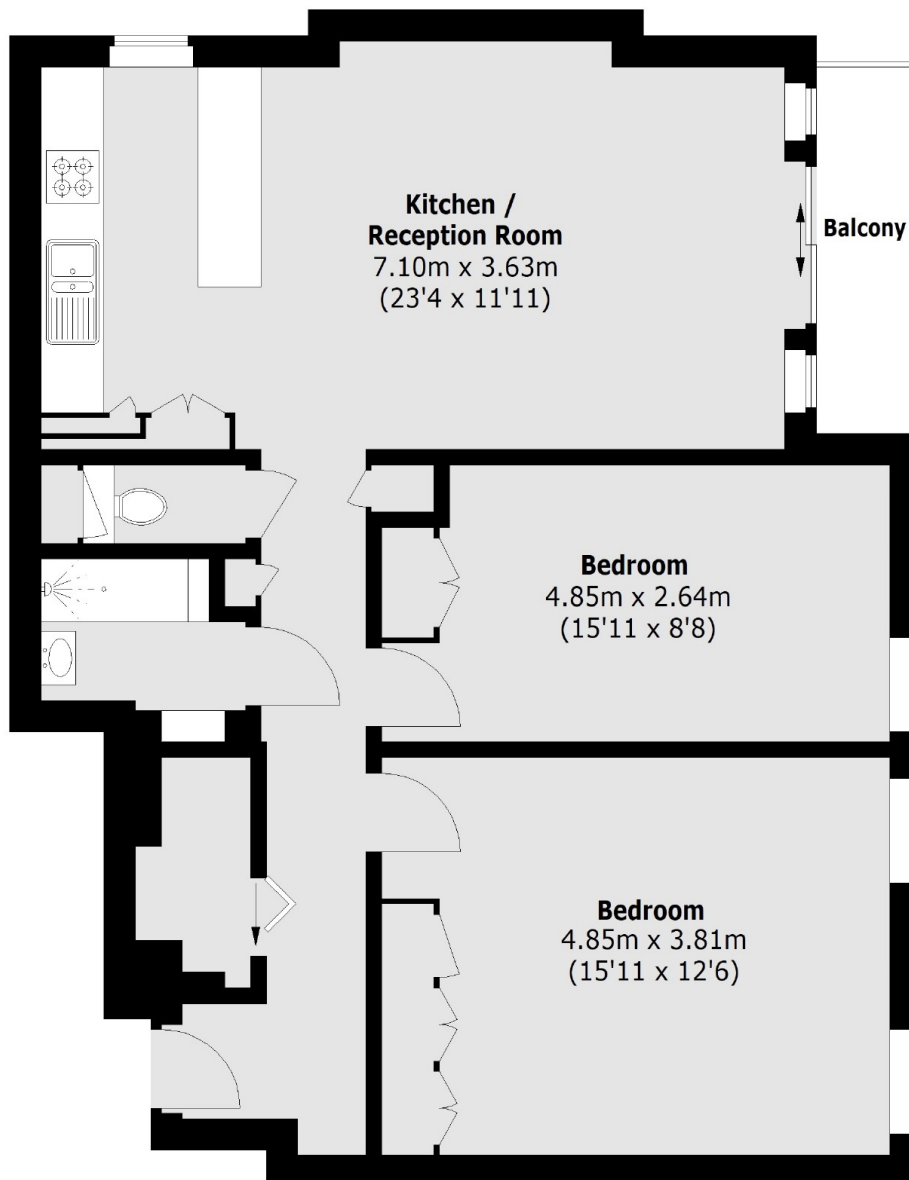
Cash Buyers Only. A two bedroom, 11th floor apartment, offering far reaching, west facing views across the City & River Thames. Boasting a balcony, brand new bathroom, vintage wood floors throughout, exceptional fitted storage and a day time porter. Excellent rental returns achievable.

Canary Wharf is approximately a 10 minute walk offering endless restaurants, bars, shopping facilities and transport links including Jubilee & Elizabeth Lines, Cross Rail, DLR stations.

Features

Cash Buyers Only
Re-fitted Kitchen
Re-fitted Bathroom
Two Double Bedroom
Day Porter
No Onward Chain

Westferry Road,
London, E14



Total area (approx.):76.49 sq. m (823 Sq. ft)
Balcony:3.32 sq. m (36 Sq. ft)