

Fairmont Avenue, E14

£485 Per week

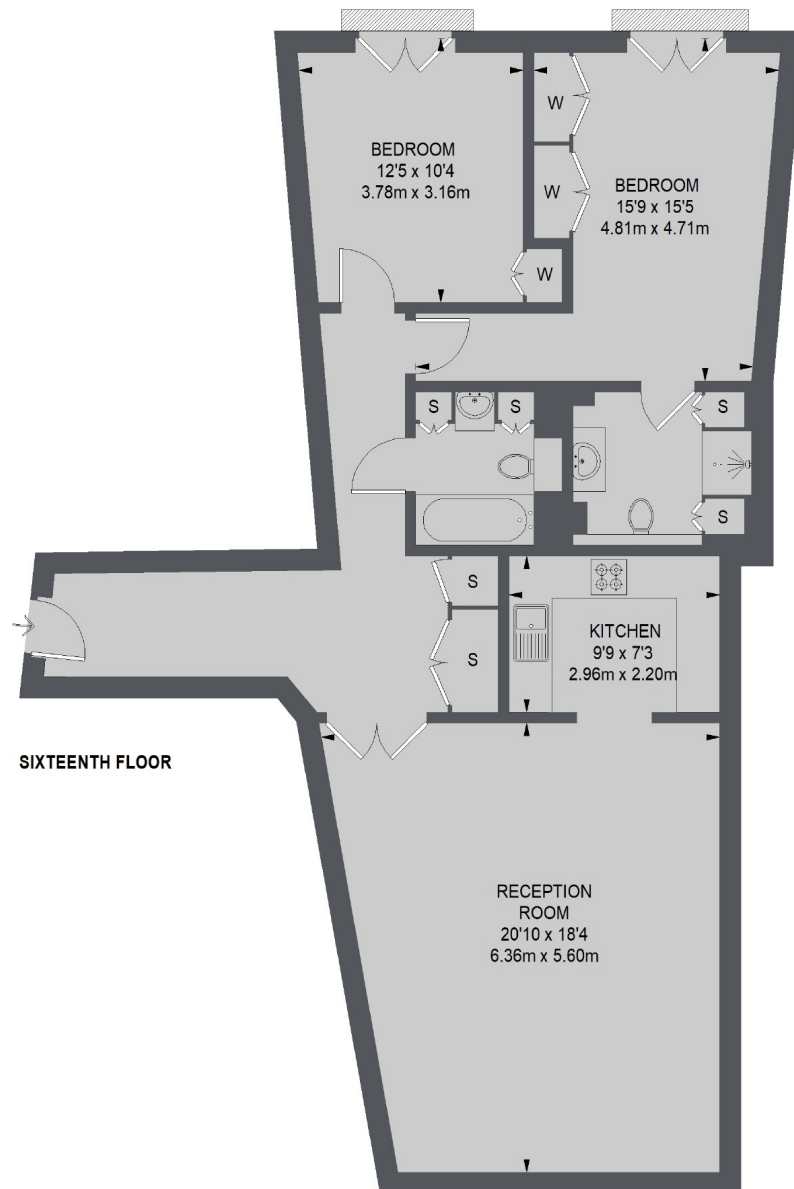
An exceptionally large two bedroom apartment on the sixteenth floor (with lift) of this superior development. This river facing apartment has floor to ceiling windows, wooden flooring and on-site swimming pool and gym.

New Providence Wharf is moments from the shops, bars and restaurants of Canary Wharf, including the popular Le Relais de Venise.

Features

- Two Bedrooms
- Two Bathrooms
- Wooden Flooring
- Balcony
- Stunning Views
- Exceptionally Bright

Fairmont Avenue, London, E14



TOTAL APPROX. FLOOR AREA
1022 SQ. FT. (94.98 SQ. M.)

Contact

To arrange a viewing call our office on the number below or visit our website.



Energy Rating: D. We aim to make our particulars both accurate and reliable. However they are not guaranteed; nor do they form part of an offer or contract. If you require clarification on any points then please contact us, especially if you're traveling some distance to view. Please note that appliances and heating systems have not been tested and therefore no warranties can be given as to their good working order.