

Marsh Wall, E14

£390 Per week

A one bedroom apartment on the twenty third floor of this sought after development. This modern apartment has an open plan reception room, floor to ceiling windows and wooden flooring.

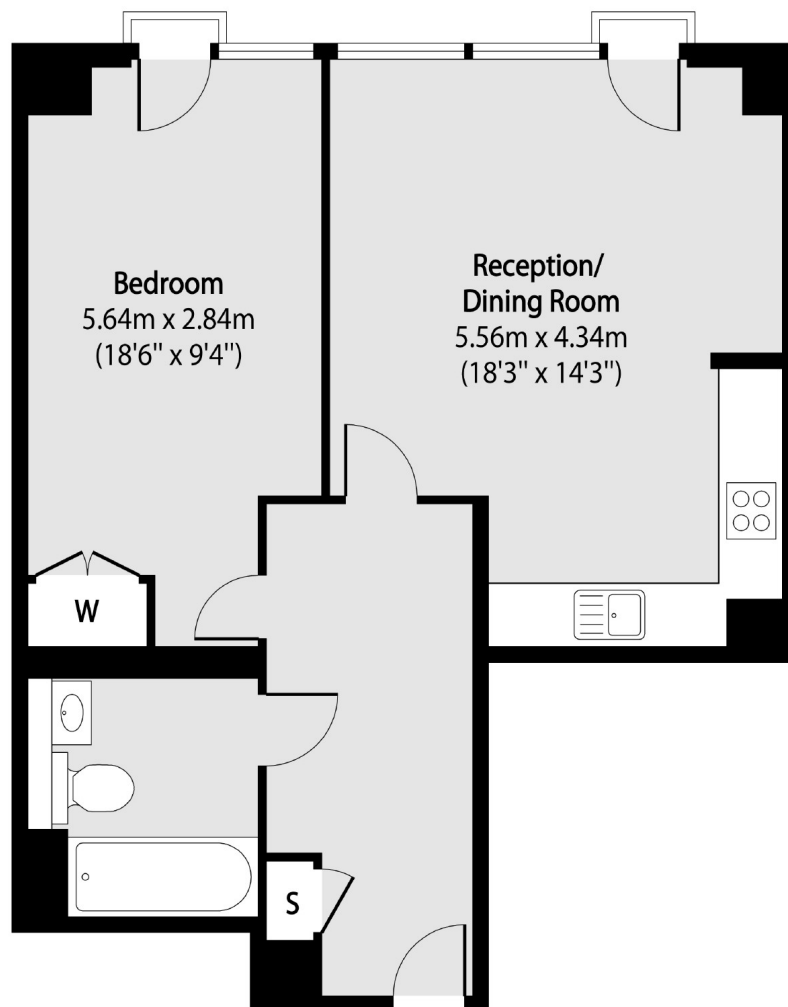
Landmark West Tower is within walking distance of the shops, bars and restaurants of Canary Wharf, including the former rum warehouse Rum and Sugar.

Features

- One Bedroom
- One Bathroom
- Twenty Third Floor
- Wooden Flooring
- Concierge
- Residents Gym

Marsh Wall,
London, E14

Ground Floor



Total area (approx): 52.02 sq m (560 sq. ft)

Contact

To arrange a viewing call our office on the number below or visit our website.



Energy Rating: . We aim to make our particulars both accurate and reliable. However they are not guaranteed; nor do they form part of an offer or contract. If you require clarification on any points then please contact us, especially if you're traveling some distance to view. Please note that appliances and heating systems have not been tested and therefore no warranties can be given as to their good working order.