

Exceptional Lateral Space

Fabulous Natural Light

Secure Gated Development

Versatile Accommodation



PROPERTY OVERVIEW

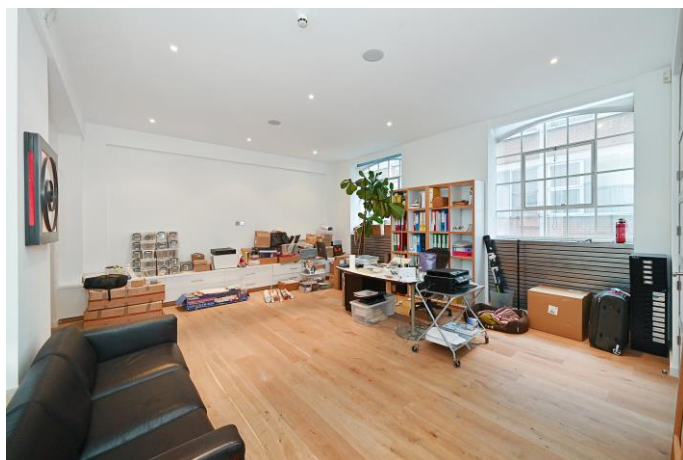
An exceptional loft style conversion within this iconic building offering over 4,500 square feet of lateral space.

Formerly BBC sound studios this secluded gated development underwent a comprehensive redesign in the 1990s, it now provides a variety of offices and residential apartments on various floors.

Situated on the first floor with lift access the internal space is arranged around a vast open plan reception area that incorporates the kitchen/dining area with four well-proportioned rooms adjoining. This fantastic lateral accommodation lends itself to a variety of configurations.

Woodstock Studios on Woodstock Grove is only moments away from Central Line access at Shepherd's Bush or Holland Park Avenue. Exceptional shopping and leisure facilities at the Westfield Centre to the immediate north, while the internationally renowned shopping and restaurants of Notting Hill are only a short distance away.

Currently available with a lease of over 995 years with B1 use, the property had previously been granted planning permission to convert into full residential use and STP provides great potential for a variety of development schemes.



Woodstock Studios

Approx. Gross Internal Area 4680 Sq Ft - 434.79 Sq M



First Floor
For Illustration Purposes Only - Not To Scale

This floor plan should be used as a general outline for guidance only and does not constitute in whole or in part an offer or contract. Any intending purchaser or lessee should satisfy themselves by inspection, searches, enquiries and full survey as to the correctness of each statement. Any areas, measurements or distances quoted are approximate and should not be used to value a property or be the basis of any sale or let.