

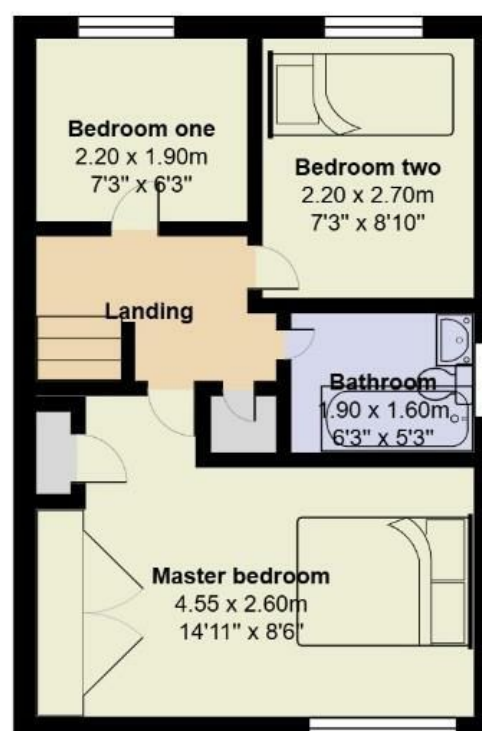
Jeffrey Ross

STYLISH SALES  
& LETTINGS  
CARDIFF'S HOME FOR



LOWFIELD DRIVE  
THORNHILL





43 Lowfield drive

Total Area: 80.4 m<sup>2</sup> ... 865 ft<sup>2</sup>

All measurements are approximate and for display purposes only





Beautiful 3 bedroom semi detached home which offers great school catchment and being close to great transport links.

Comments by - Mr Max Tustin



## LOWFIELD DRIVE

THORNHILL, CF14 9HT - ASKING PRICE - £340,000



3 Bedroom(s)



1 Bathroom(s)



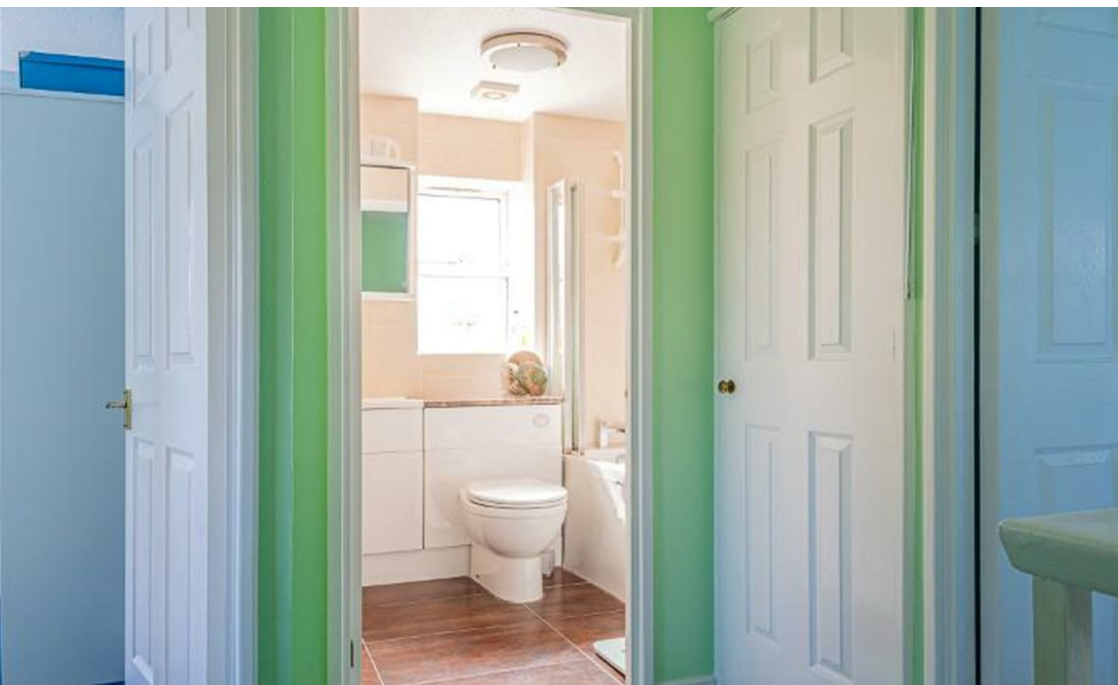
865.00 sq ft

**\*\*BEAUTIFUL THREE BEDROOM FAMILY HOME\*\*** JeffreyRoss are delighted to present this impressive semi-detached property with a conservatory. Situated in a quiet cul-de-sac within Thornhill, offering great access to transport links and local amenities. The property offers an inviting entrance hall, spacious reception room and an open plan kitchen/diner leading to the rear garden. The first floor boasts two double bedrooms with built in wardrobes to the master, a smaller single bedroom and family bathroom. Call now to avoid missing out.

### PROPERTY SPECIALIST

**Mr Max Tustin**  
max@jeffreycross.co.uk  
Sales Negotiator





**Hall**

**Living**  
4'43 x 4'5 (13'1""141'0" x 13'1""16'4")

**Kitchen/Diner**  
4'56 x 3'07 (13'1""183'8" x 9'10""22'11")

**Conservatory**  
4'36 x 2'4 (13'1""118'1" x 6'6""13'1")

**Landing**

**Bedroom one**  
2'20 x 1;90 (6'6""65'7" x 3'3";295'3")

**Bedroom two**  
2'20 x 2'70 (6'6""65'7" x 6'6""229'7")

**Bathroom**  
1'90 x 1'60 (3'3""295'3" x 3'3""196'10")

**Master bedroom**  
4'55 x 2'60 (13'1""180'5" x 6'6""196'10")

**School catchment**  
My English medium primary catchment area is

Llysfaen Primary School (year 2024-25)  
Thornhill Primary School (year 2024-25)  
Llanishen Fach Primary School (year 2024-25)  
Coed Glas Primary School (year 2024-25)

My English medium secondary catchment area is  
Llanishen High School (year 2024-25)

My Welsh medium primary catchment area is  
Ysgol Y Wern (year 2024-25)  
Sylwer - Nid oes dalgylch wedi ei sefydlu ar gyfer Howardian  
Primary nac Ysgol Gynradd Groes-wen Primary School eto.  
Croesewir ceisiadau.

My Welsh medium secondary catchment area is  
Ysgol Gyfun Gymraeg Glantaf (year 2024-25)

**EPC**  
TBC

**Tax band**  
E





Energy Efficiency Rating		
	Current	Potential
Very energy efficient - lower running costs		
(92 plus) <b>A</b>		
(81-91) <b>B</b>		
(69-80) <b>C</b>		
(55-68) <b>D</b>		
(39-54) <b>E</b>		
(21-38) <b>F</b>		
(1-20) <b>G</b>		
Not energy efficient - higher running costs		
<b>England &amp; Wales</b>	EU Directive 2002/91/EC 