



RADYR PLACE

GABALFA





RADYR PLACE

GABALFA, CF14 3HP - £750 PCM



1 bedroom(s)



1 bathroom(s)



489.00 sq ft

A modern and spacious 1 bedroom apartment situated in easy reach of the Heath Hospital and the City Centre. Accommodation comprises of open plan lounge with open-plan kitchen with breakfast bar, large double bedroom with fitted wardrobes and a stylish, contemporary bathroom with shower. Available unfurnished and further benefits secure and gated off road parking. The apartment comes furnished.

EPC - D

Council Tax - B

A holding fee of one weeks' rent will be payable to secure the dwelling. This will be deducted from the final balance payable upon moving into the dwelling, subject to a successful application. Jeffrey Ross Limited reserves the right to retain this payment should the applicant have provided false or misleading information at the time of applying for the dwelling or failed to take reasonable steps to enter into the Standard Occupation Contract.

PROPERTY SPECIALIST

Mr Rhys Carter


rhys.carter@jeffreyross.co.uk

Lettings







Energy Efficiency Rating		
	Current	Potential
Very energy efficient - lower running costs		
(92 plus) A		
(81-91) B		
(69-80) C	71	73
(55-68) D		
(39-54) E		
(21-38) F		
(1-20) G		
Not energy efficient - higher running costs		
England & Wales	EU Directive 2002/91/EC 	



GK53 LYW

Carb'n off
0118 962 8960 carb'n-off.co.uk
Commercial Vehicle & Light Trailer Sales & Hire

EXIT ↑



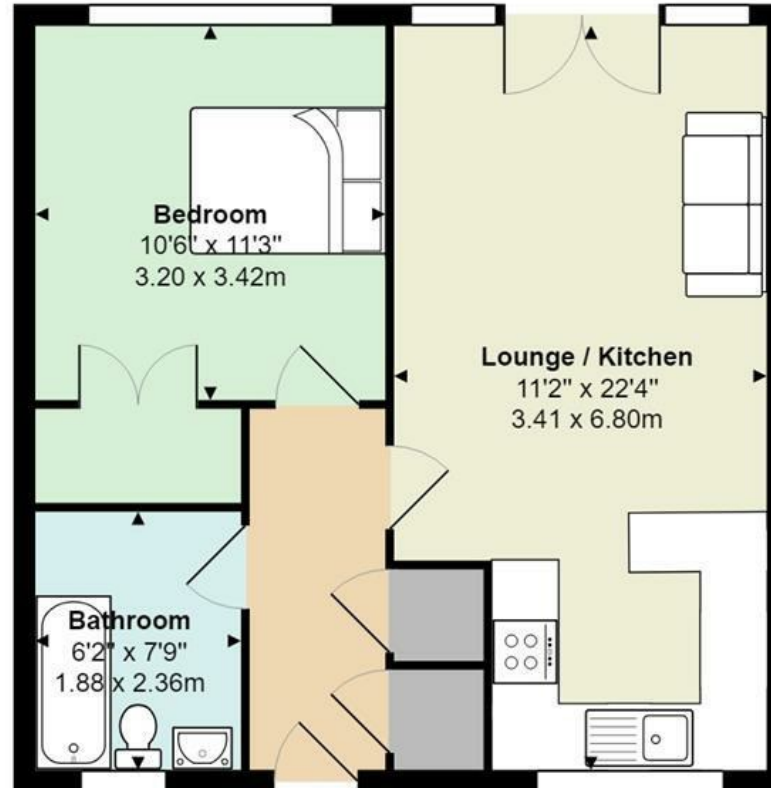
”

Within walking distance of UHW is this rather lovely one bedroom apartment with secure, gated parking.

”

Comments by Mr Rhys Carter

Radyr Place, Mynachdy



Total Area: 489 ft² ... 45.5 m²

All measurements are approximate and for display purposes only

www.jeffreyross.co.uk

Jeffrey Ross