

Jeffrey Ross

STYLISH SALES  
& LETTINGS  
CARDIFF'S HOME FOR



CAMELOT WAY  
THORNHILL



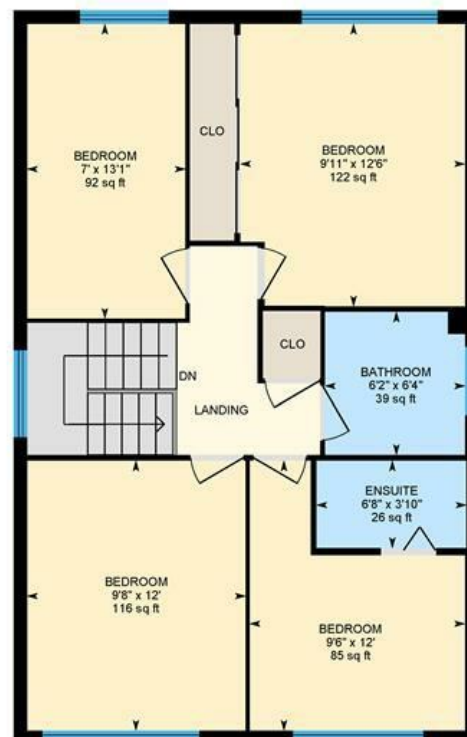


## Camelot Way, Thornhill, CRF

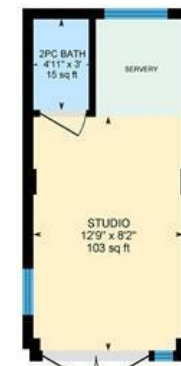
Main Building: Total Interior Area 1255.40 sq ft



Ground Floor



1st Floor



STUDIO







With plenty of schools and amenities nearby and easy access to the motorway, the property is ideal for a family, or anyone looking to purchase a home in the sort-after Thornhill.

Don't miss the opportunity to make this house your home. Call the office on 02920499680 to book a viewing straight away.

Comments by - Mr Ollie Vincent



## CAMELOT WAY

THORNHILL, CF14 9AN - ASKING PRICE - £530,000



4 Bedroom(s)



2 Bathroom(s)



1373.00 sq ft

Jeffrey Ross are proud to present, 6, Camelot Way. This immaculate & beautifully dressed home is sure to impress. With plenty of schools & amenities nearby & easy access to the motorway, the property is ideal for those looking to purchase a home in the sought-after area, Thornhill.

Step through the porch & into the entrance hall. Walk past the downstairs WC with 'Hudson & Reed' suite. To your left, you will find the larger of the 2 Reception rooms with huge bay window and a 'Wiking' wood burner. Straight ahead you'll see the under stairs cupboard with plenty of storage. To your right are 2 doors. The first leads to the new modern kitchen featuring all the usual appliances, with plenty of storage. The 2nd door takes you into the beautifully presented living room with double doors looking out across the incredible, south-facing rear garden, complete with 2 patio areas & large lawn, great for day & evening sunshine.

The recently converted Garage, with double doors, a separate loo and a small kitchenette is an excellent additional space, which could double up as a home office, home gym, or pool room / bar.

Upstairs, you'll find the stunning family bathroom, featuring a 'Villeroy & Boch' bath, hand basin and toilet and a 'Hudson Reed' shower, with body jets, hand held option, and rainfall shower head. The large, bright, master bedroom, has fitted wardrobes with plenty of storage space. Along the landing you'll find the bright blue, second double bedroom which is very generously proportioned. The 3rd Bedroom is another generous double and the smaller 4th features an incredible en-suite with Matki Shower Cubicle and a 'Hudson Reed' Shower Tower with rain fall shower head, waterfall, hand held and body jet options.

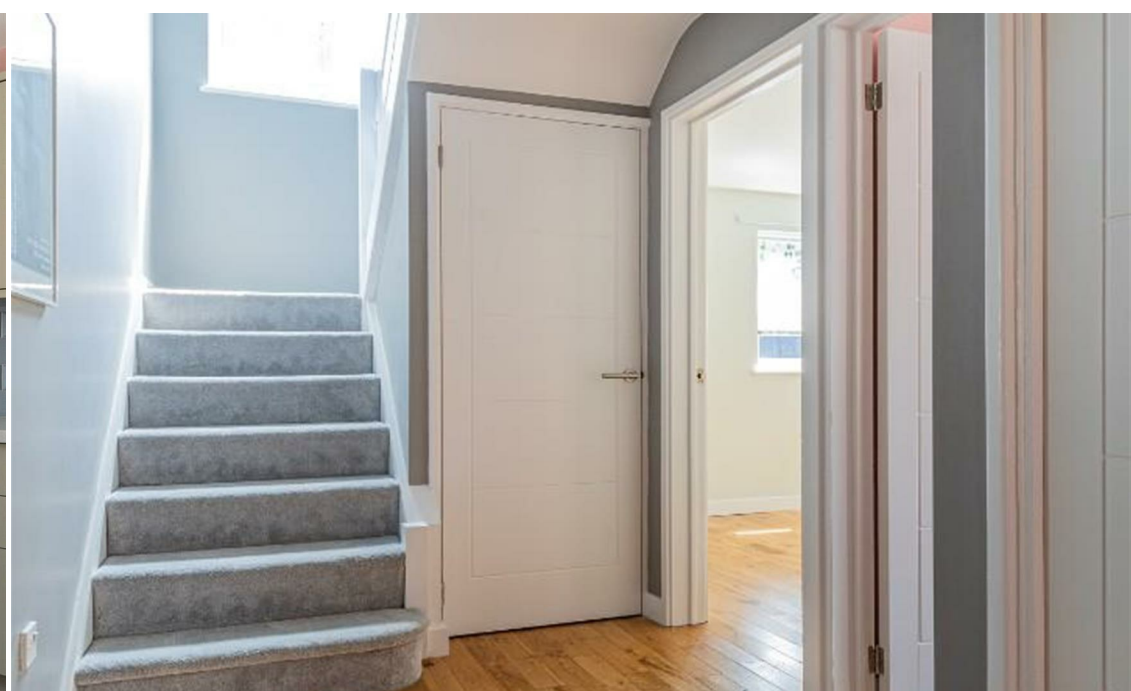
This beautiful home has been fully renovated, fully rewired with new electrics, new plumbing and fresh plaster, fresh paint, solid oak floors and new carpets throughout.. it is very impressive.! It's so well maintained, that you really could move straight in

### PROPERTY SPECIALIST

Mr Ollie Vincent  
ollie.vincent@jeffreycross.co.uk







**Hallway**  
3.33m x 1.75m (10'11 x 5'9)

**WC**  
2.18m x 1.02m (7'2 x 3'4)

**Reception Room1 (Open Plan - Living Area)**  
3.91m x 3.63m (12'10 x 11'11)

**Reception Room 1 (Open Plan - Dining Area)**  
1.96m x 3.63m (6'5 x 11'11)

**Kitchen**  
3.12m x 3.91m (10'3 x 12'10)

**Reception Room 2 (Dining)**  
2.69m x 5.94m (8'10 x 19'6)

**To the First Floor**

**Bedroom 1 (Mirrored Wardrobes)**  
3.02m x 3.81m (9'11 x 12'6)

**Bedroom 2 (Blue Room)**  
2.95m x 3.66m (9'8 x 12')

**Bedroom 3**  
2.13m x 3.99m (7 x 13'1)

**Bedroom 4 (with Ensuite)**  
2.90m x 3.66m (9'6 x 12)

**Ensuite**  
2.03m x 1.17m (6'8 x 3'10)

**Family Bathroom**

**Studio / Converted Garage**  
3.89m x 2.49m (12'9 x 8'2)

WC & Kitchenette  
-  
Home Office  
Home Gym  
Income potential Air BnB

**Garden**  
Gardens Front and Back  
Private Rear Garden  
Lawn  
2 x Patio Area

**Tenure**  
We are informed by our client that the property is Freehold, this is to be confirmed by your legal advisor.

**School Catchment**

My English medium primary catchment area is:  
Llysfaen Primary School (year 2024-25)  
Thornhill Primary School (year 2024-25)  
Llanishen Fach Primary School (year 2024-25)  
Coed Glas Primary School (year 2024-25)

My English medium secondary catchment area is:  
Llanishen High School (year 2024-25)

My Welsh medium primary catchment area is  
Ysgol Y Wern (year 2024-25)

My Welsh medium secondary catchment area is:  
Ysgol Gyfun Gymraeg Glantaf (year 2024-25)

**Council Tax**  
BAND F

**Additional Information**

Additional converted Garage, with power, heating, WC and small kitchenette  
Refurbished / Renovated throughout  
Driveway parking





Energy Efficiency Rating		
	Current	Potential
Very energy efficient - lower running costs		
(92 plus) <b>A</b>		
(81-91) <b>B</b>		<b>82</b>
(69-80) <b>C</b>	<b>69</b>	
(55-68) <b>D</b>		
(39-54) <b>E</b>		
(21-38) <b>F</b>		
(1-20) <b>G</b>		
Not energy efficient - higher running costs		

England & Wales

EU Directive  
2002/91/EC













