

CARDIFF'S HOME FOR  
STYLISH SALES  
& LETTINGS

JeffreyRoss

HEOL LEWIS

RHIWBINA





# HEOL LEWIS

RHIWBINA, CF14 6QE - £1,100 PCM  
PCM

2 bedroom(s) 1 bathroom(s) 753.00 sq ft

Located in a popular spot in Rhiwbina and brand newly renovated in 2024 is this rather brilliant, two-bedroom, spacious apartment that comes with its own garden. The owner has done a brilliant job at renovating the property to make a fantastic living opportunity. The property is located on the ground-floor and offers spacious lounge, separate, newly fitted kitchen with space for fridge-freezer and washing machine, along with space for a 4-seater dining table. The property further offers two large double bedrooms, a beautiful bathroom suite (with bathtub and shower over,) small storage cupboard, off-road parking and the garden, as prior mentioned. Perfect for a couple or small family, this is a superb rental opportunity and one we're delighted to offer.

UNFURNISHED. GAS CENTRAL HEATING. FLOORPLAN AVAILABLE.

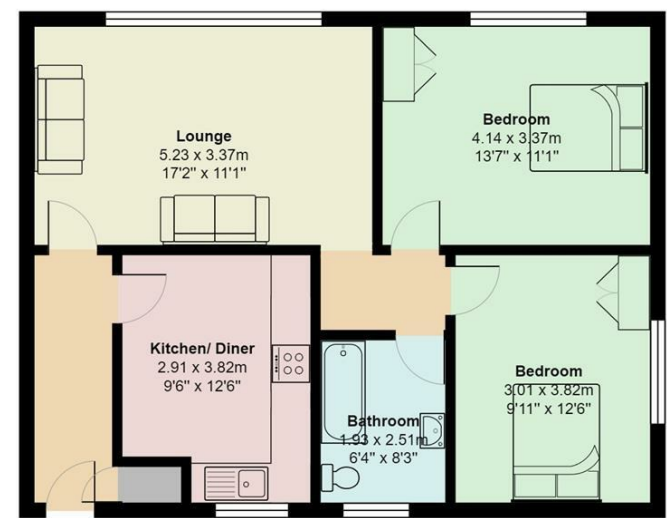
COUNCIL TAX BAND of D  
EPC RATING of D

A holding fee of one weeks' rent will be payable to secure the dwelling. This will be deducted from the final balance payable upon moving into the dwelling, subject to a successful application. Jeffrey Ross Limited reserves the right to retain this payment should the applicant have provided false or misleading information at the time of applying for the dwelling or failed to take reasonable steps to enter into the Standard Occupation Contract.



Energy Efficiency Rating		
	Current	Potential
Very energy efficient - lower running costs		
(92 plus) <b>A</b>		
(81-91) <b>B</b>		
(69-80) <b>C</b>		
(55-68) <b>D</b>	65	75
(39-54) <b>E</b>		
(21-38) <b>F</b>		
(1-20) <b>G</b>		
Not energy efficient - higher running costs		
<b>England &amp; Wales</b>	EU Directive 2002/91/EC	

## Heol Lewis, Rhiwbina



Total Area: 70.0 m<sup>2</sup> ... 753 ft<sup>2</sup>

All measurements are approximate and for display purposes only

PROPERTY SPECIALIST  
Ms Jodie Price  
jodie.price@jeffreycross.co.uk