



37 Bells Court

Helmsley, YO62 5BA

Offers Around £175,000



37 Bells Court

Helmsley, York, YO62 5BA

Offers Around £175,000



37 Bells Court is a light and airy two bedroom ground floor apartment, located in the sought after market town of Helmsley. Close to the town's centre, this property is in walking distance from local shops and amenities. The property has a spacious sitting and dining room with separate kitchen. There are two bedrooms, both with built in storage. The bathroom has been recently renovated with a walk-in shower cubicle. The property, set within the Bells Court development, offers low maintenance living with communal areas maintained by a management company. The property benefits from an allocated off street parking space. This immaculate property is offered with NO ONWARD CHAIN.

- Lovely two bedroom ground floor flat
- Two bedrooms
- Well maintained communal gardens
- Newly updated bathroom with walk-in shower cubicle
- Open and airy accommodation
- Fantastic central Helmsley location
- Spacious living and dining room area
- Off street allocated parking space
- NO ONWARD CHAIN

Sitting Room

UPVC front door, two double glazed front aspect windows, fire place with surround, laminate flooring and radiator. Open to:

Dining Room

With rear aspect double glazed bay window, radiator.

Kitchen

Double glazed rear aspect window, range of wall and base units, stainless steel sink with mixer tap. Integrated fridge/freezer, electric over and gas hob with extractor hood over. Space for a washing machine and dishwasher. Gas boiler. Radiator.

Bedroom One

Rear aspect double glazed window, fitted wardrobes and radiator.

Bedroom Two

Double glazed front aspect window, built in storage cupboard, radiator.

Bathroom

Front aspect double glazed window, walk-in shower cubicle, low flush WC, pedestal sink with mixer tap. Heated ladder towel rail. Fully tiled. Extractor fan.

Outside

With storage cupboard, wheelchair ramp access to the front door. Communal gardens. Allocated parking space.

Services

Mains connected to water, drainage, gas and electric.

Tenure

Leasehold property with approx 965 years left. Ground rent is £1000 paid yearly and covers the maintenance and upkeep of the general communal areas.

Location

Helmsley is a picturesque market town in the Ryedale district of North Yorkshire. Historically part of the

North Riding of Yorkshire, the town is located at the point where Ryedale leaves the moorland and joins the flat Vale of Pickering. The village itself has plenty of local amenities, shops and cafes. Good junior school and within the catchment area for Ryedale secondary school.

Council Tax Band C



Road Map



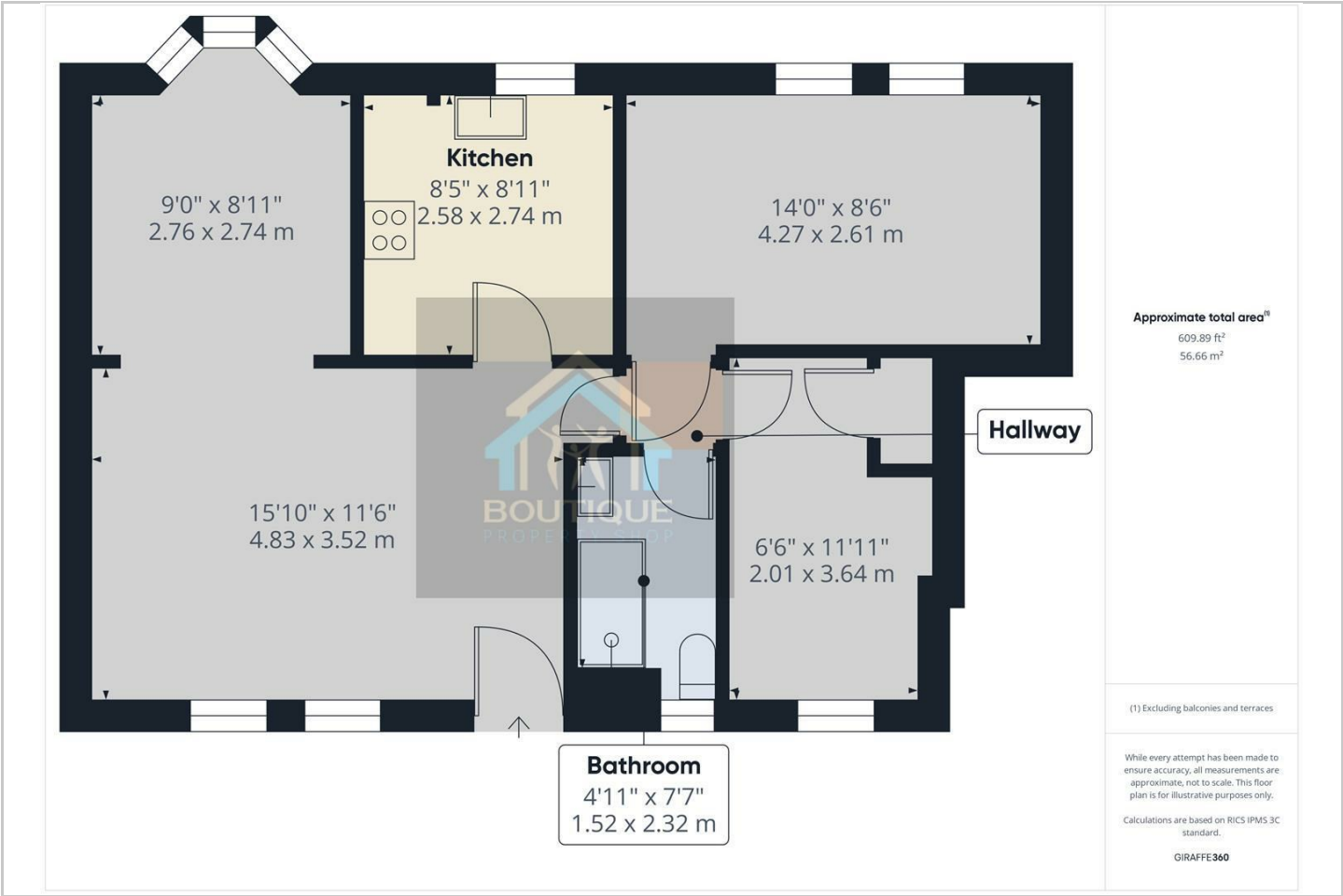
Hybrid Map



Terrain Map



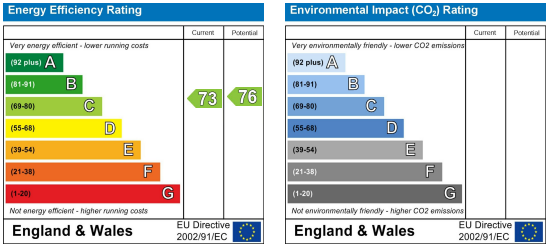
Floor Plan



Viewing

Please contact our Boutique Property Shop Office on 07515763622 / 01653 524224 if you wish to arrange a viewing appointment for this property or require further information.

Energy Efficiency Graph



These particulars, whilst believed to be accurate are set out as a general outline only for guidance and do not constitute any part of an offer or contract. Intending purchasers should not rely on them as statements of representation of fact, but must satisfy themselves by inspection or otherwise as to their accuracy. No person in this firm's employment has the authority to make or give any representation or warranty in respect of the property.