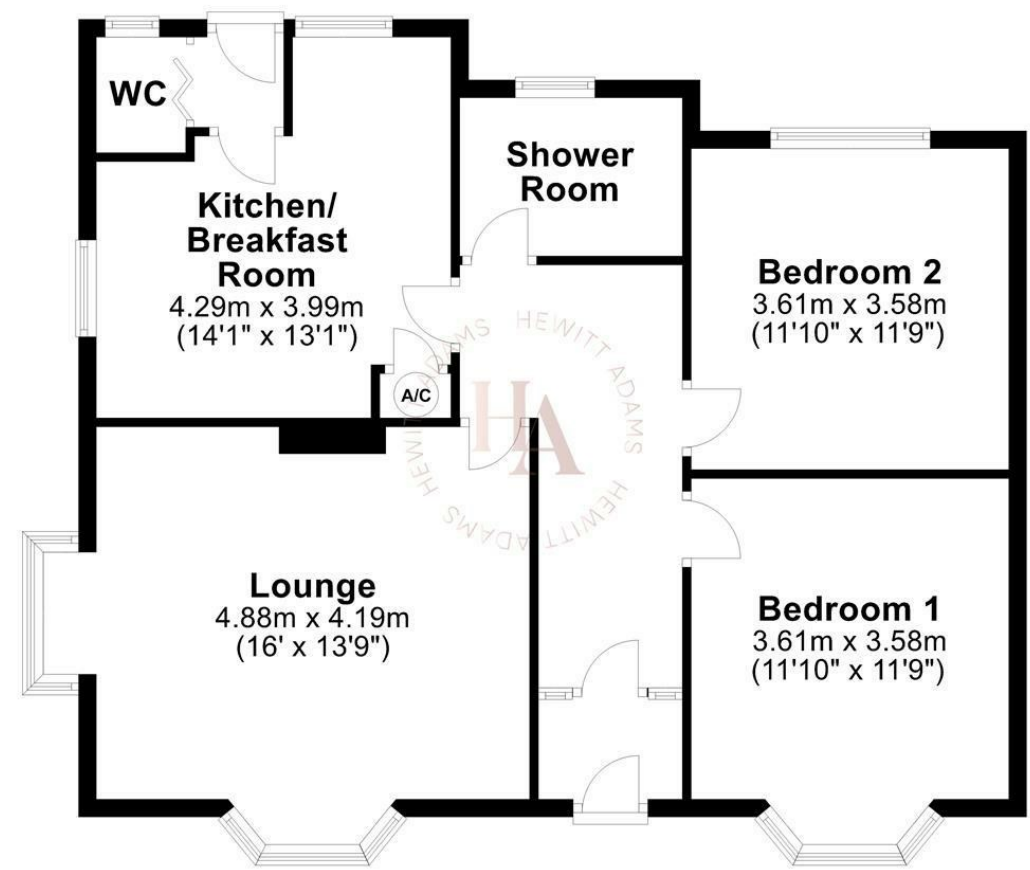




Ground Floor

Approx. 84.1 sq. metres (905.1 sq. feet)



Total area: approx. 84.1 sq. metres (905.1 sq. feet)
For illustration purposes only - not to scale



Mill Lane, Wirral, CH49 3NR

£290,000

2 Bedroom 1 Reception 1 Bathroom D

Two Bed Detached Bungalow - Corner Plot - Close To Greasby Village - No Onward Chain

Hewitt Adams is delighted to offer to the sales market this wonderful two bedroom, detached true bungalow on Mill Lane, Greasby, a highly sought after area with excellent amenities and commuting links throughout Wirral, Chester and Liverpool.

With a modest scheme of modernisation this gem of a property offers a new owner the chance to create a dream home. Perfectly suited to downsizers!!

In brief the property affords: entrance porch, hall, spacious lounge, kitchen, two double bedrooms, shower room and w.c.

Positioned on a corner plot the property has wrap around gardens that complete this home perfectly with lawned and patio areas. You also have gated access to off road parking at the side of the property.

Call Hewitt Adams today to view this no chain property.

Front Entrance

Into:

Porch

Door to:

Hall

Radiator, power points

Lounge

16'0" x 13'8" (4.88 x 4.19)

Two double glazed bay windows, radiator, power points

Kitchen

14'0" x 13'1" (4.29 x 3.99)

Wall and base units, inset sink, space and plumbing for washing machine, space and plumbing for dishwasher, space for fridge freezer, space for Rangemaster cooker, double glazed window, door to rear porch

W.C.

W.C, wash hand basin

Bedroom One

11'10" x 11'8" (3.61 x 3.58)

Double glazed bay window, radiator, power points

Bedroom Two

11'10" x 11'8" (3.61 x 3.58)

Double glazed bay window, radiator, power points

Shower Room

8'2" x 5'10" (2.51 x 1.78)

Comprising walk in shower, w.c, wash hand basin, heated towel rail, tiled walls

Externally

Front - Wrap around garden mainly laid to lawn with side double gate access for off road parking

Rear - Mainly laid to lawn with decked seating area, garden shed and side gate access to front and side

