



Bethany Court, Moss Hey, Spital, CH63 9AW
£159,950

2 Bedroom 1 Reception 2 Bathroom C

****Modern GROUND-FLOOR Apartment - Two Bedrooms - Two Bathrooms - No Onward Chain****

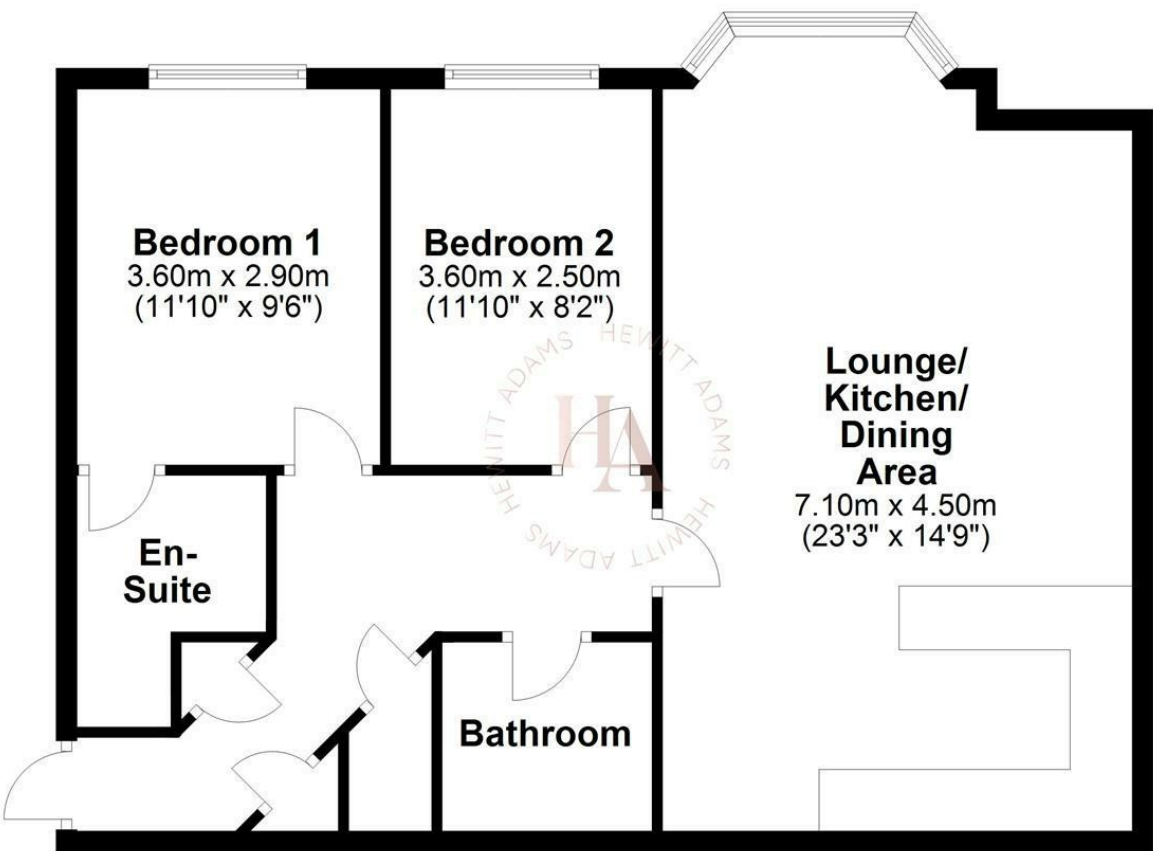
Hewitt Adams is delighted to bring to the market this TWO BEDROOM apartment located in Bethany Court on Moss Hey in Spital. This GROUND-FLOOR apartment is one of the larger style in the development - with a LARGER OPEN PLAN KITCHEN & LIVING AREA.

The ground-floor apartments tend to be very popular as they obviously can appeal to buyers of all ages!

The property has been IMMACULATELY MAINTAINED and has undergone a recent redecoration and had UPDATED FLOORING.

A perfect FIRST TIME BUY or bolthole or downsizing option. Located to the rear of the building which is also a very quiet location.

In brief the accommodation affords; entrance hall, two bedrooms - the master with an en-suite, shower-room, bathroom, and a LARGE open-plan kitchen dining living room with a fully integrated kitchen.



Total area: approx. 72.1 sq. metres (776.1 sq. feet)
For illustration purposes only - not to scale

Front Entrance

Into;

Hall

Cloak-cupboard and separate cupboard, heater, laminate flooring

Bedroom One

11'9" x 9'6" (3.6 x 2.9)

Double glazed window, fitted wardrobes, heater, laminate flooring, door into;

En-Suite

Comprising shower, low level W.C, wash hand basin, towel rail

Bedroom Two

8'6" x 8'2" (2.6 x 2.5)

Double glazed window, heater, laminate flooring

Bathroom

Comprising bath with overhead shower, low level W.C, wash hand basin, tiled floor

Open Plan Kitchen Diner Living Area

23'3" x 14'9" (7.1 x 4.5)

One of the larger OPEN-PLAN kitchen diner living rooms in the development, with modern fitted kitchen with integrated appliances - dishwasher, washer dryer, fridge&freezer, oven and hob, peninsula island.

Large living room and dining area.

Double glazed window, heater.

Additional Info

Service charge - £135 pcm
ground rent - £200 per year

106 years left on lease

Designated Parking Space + Visitor Bays

Bike Store

