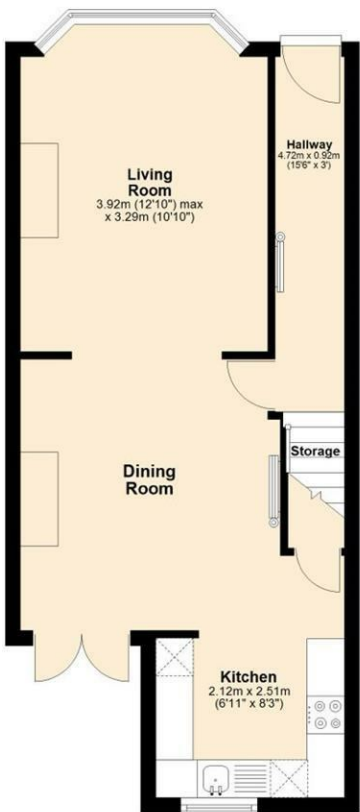




Ground Floor

Approx. 38.9 sq. metres (418.4 sq. feet)



First Floor

Approx. 38.5 sq. metres (414.2 sq. feet)



Total area: approx. 77.3 sq. metres (832.6 sq. feet)

Jessamine Road, Birkenhead, CH42 5PR

£900 PCM

2 Bedroom 2 Reception 1 Bathroom A

*** Fully Refurbished - EPC Rating A - Solar Panels -Huge Saving On Energy Bills ***

Hewitt Adams is delighted to offer TO LET this incredible Two Bedroom mid Terrace on Jessamine Road, Birkenhead.

The property has been refurbished from top too bottom, and has an EPC rating of an A - meaning the property will extremely efficient to run, and there will be a huge saving on energy bills.

In brief the property consist of; Hallway, Lounge, Kitchen/Diner, two Bedrooms and a Bathroom. Externally there is on street Parking and a rear Yard.

No Pets, Available Now, Unfurnished

The Specification

Fully Refurbished
Solar panels
Internal wall Insulation
New windows and doors
New Kitchen and Bathroom
Fully plastered and decorated
All new joinery and internal doors
New flooring
Black nickel sockets, switches and wall lights
New Blinds

Hallway

LVT flooring, radiator, staircase to the first floor accommodation.

Lounge

Bay window to the front elevation, radiator, open to the Dining Room.

Dining Room

French doors to the rear elevation, LVT flooring, radiator, feature ceiling pendant, open to the Kitchen.

Kitchen

Wall and base units with worktops, inset sink and drainer with mixer tap, electric oven, hob, extractor fan, space for white goods, storage cupboard, LVT flooring, window to the rear elevation.

Bedroom 1

Window to the front elevation, radiator, wall lights.

Bedroom 2

Window to the rear elevation, radiator, wall lights.

Bathroom

Panel bath with glass screen and mixer shower, WC, wash basin vanity unit with mixer tap, heated towel radiator, LVT flooring, extractor fan, window to the rear elevation.

Externally - Front Elevation

On street Parking, welcome light.

Externally - Rear Elevation

Stoned rear Yard, with gated access to the rear.

